

La humla suse i enga



VILLENGA

Leilighetshefte

Felt A | Trinn 1

Innhold

5 Forbehold

6 Bygg A1
2-roms
3-roms
4-roms

42 Bygg A6
2-roms
3-roms
4-roms

74 Bygg A7
2-roms
3-roms
4-roms

104 Bygg A8
2-roms
3-roms
4-roms

126 Kontakt



Forbehold:

- Boligene er ikke detaljprosjektert. Det kan bli mindre justeringer av boligen i forbindelse med detaljprosjektering.
- Balkonger og terrasser er ikke detaljprosjektert. Det kan bli mindre justeringer i forbindelse med detaljprosjektering.
- Det vil bli nedsenket himling lokalt der det er nødvendig fra tekniske føringer fra sprinkel, ventilasjon etc.
- Det kan forekomme ytterligere innkassinger og nedsenket himling som følge av detaljprosjekteringen.
- Kjøkken på tegninger er veiledende og angir utstrekning av kjøkkenet. Egne tegninger for kjøkken vil bli utarbeidet i samråd med kjøkkenkonsulent når leverandør er valgt.
- Tegning som viser elektriske punkter utarbeides senere.
- Stiplede objekter inngår ikke i leveransen.
- Det vil forekomme synlige sprinklerhoder.
- Avvik fra viste løsninger, samt de oppgitte arealer på boenhetens totalareal og de enkelte rom, vil kunne forekomme. Møblering og salgstegninger tar ikke hensyn til tilgjengelighetskravet.

Definisjoner og beregninger er basert på:

NS 3940: 2023

Arealer er oppgitt i m².

BRA-i: Internt bruksareal. Bruksarealet av boenheten innenfor omsluttende vegger.

BRA-e: Eksternt bruksareal. Bruksarealet av alle rom som ligger utenfor boenheten(e), men som tilhører denne/ disse.

BRA-b: Innglasset balkong mv. Bruksarealet av innglasset balkong, veranda eller altan tilknyttet boenheten.

TBA: Terrasse- og balkongareal. Arealet av terrasser og åpne balkonger tilknyttet boenheten.

BYGG

A1

LEILIGHETER

2

ROMS

2-roms

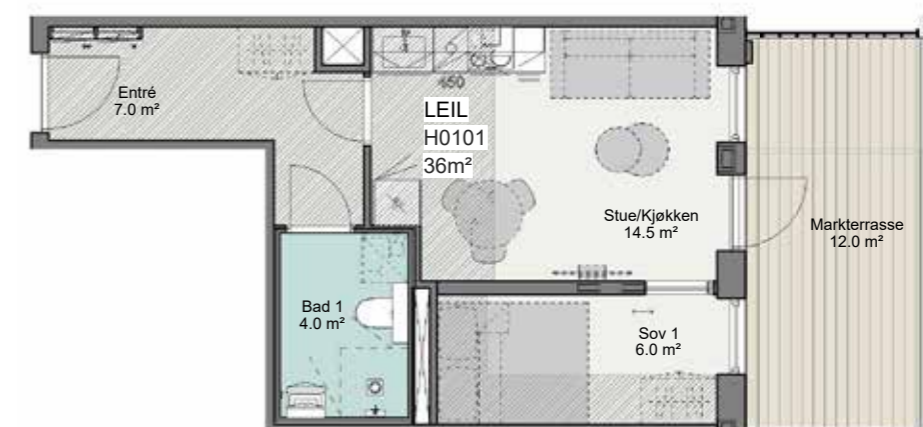
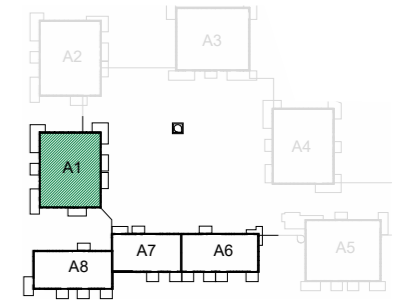
A1-H0101

Etasje: 1. etg

BRA-i: 36 kvm

TBA: 12 kvm

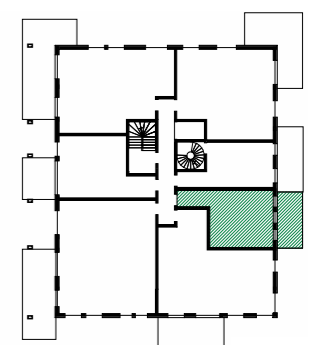
BRA-e: 2.5 kvm



1:100



- Gips himlinger / Nedkassinger m/høyde min. 2.25m
- Gips himlinger / Nedkassinger m/høyde min. 2.40m
- Systemhimling på teknisk rom m/høyde min. 2.20m
- Himling på bad m/høyde min. 2.20m



2-roms

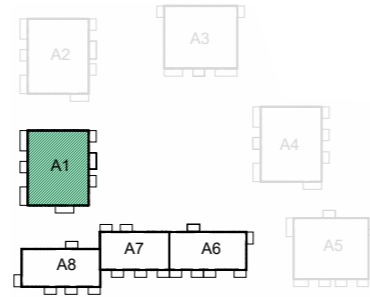
A1-H0203

Etasje: 2. etg

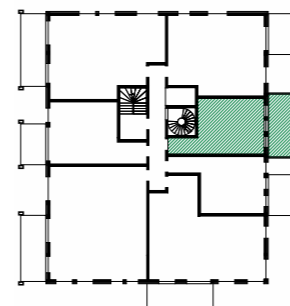
BRA-i: 36 kvm

TBA: 13 kvm

BRA-e: 2.5 kvm



1:100



- Gips himlinger / Nedkassinger m/høyde min. 2.25m
- Gips himlinger / Nedkassinger m/høyde min. 2.40m
- Systemhimling på teknisk rom m/høyde min. 2.20m
- Himling på bad m/høyde min. 2.20m

2-roms

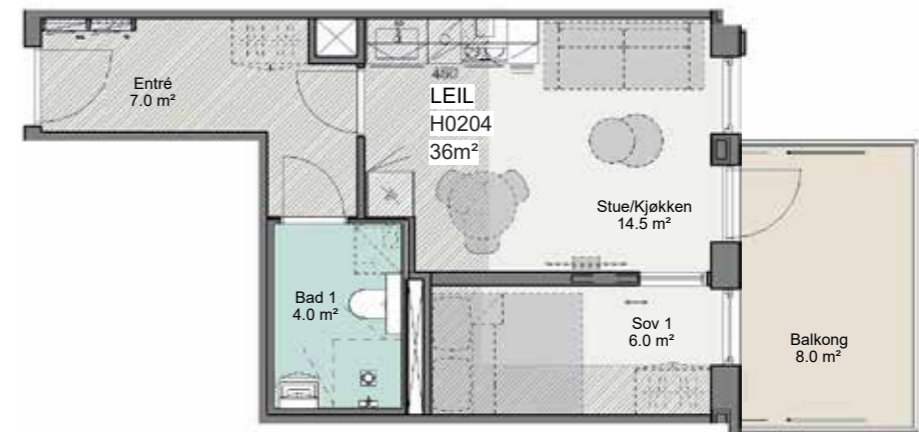
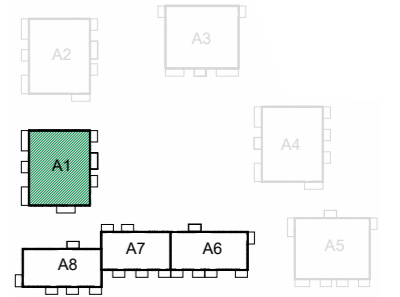
A1-H0204

Etasje: 2. etg

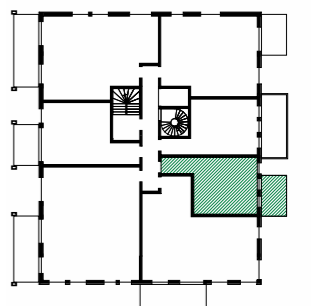
BRA-i: 36 kvm

TBA: 8 kvm

BRA-e: 2.5 kvm



1:100



- Gips himlinger / Nedkassinger m/høyde min. 2.25m
- Gips himlinger / Nedkassinger m/høyde min. 2.40m
- Systemhimling på teknisk rom m/høyde min. 2.20m
- Himling på bad m/høyde min. 2.20m

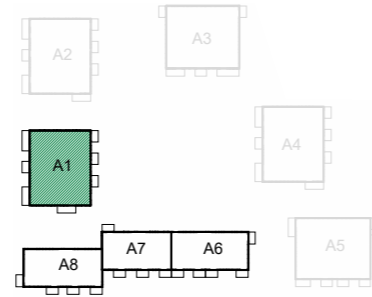
A1-H0303

Etasje: 3. etg

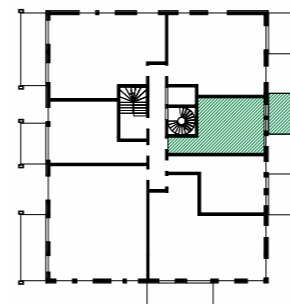
BRA-i: 36 kvm





TBA: 8 kvm

BRA-e: 2.5 kvm



1:100



-  Gips himlinger / Nedkassinger m/høyde min. 2.25m
-  Gips himlinger / Nedkassinger m/høyde min. 2.40m
-  Systemhimling på teknisk rom m/høyde min. 2.20m
-  Himling på bad m/høyde min. 2.20m

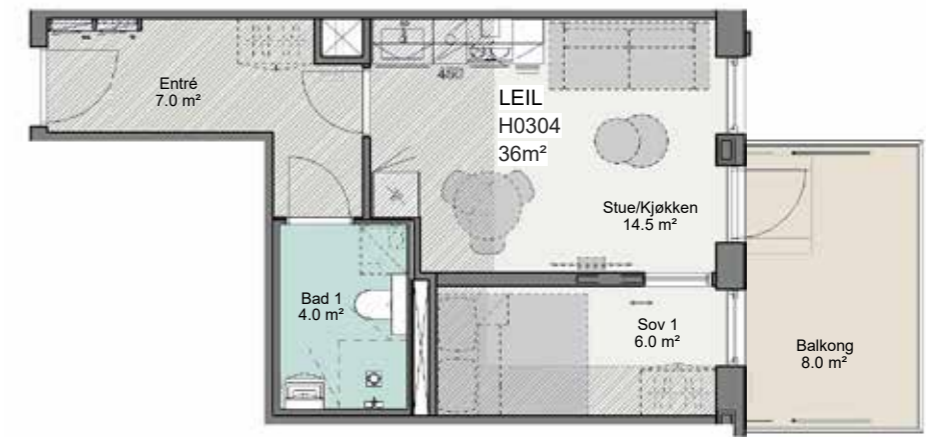
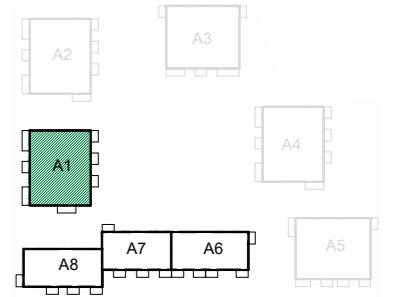
A1-H0304

Etasje: 3. etg

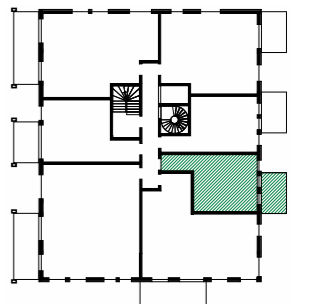
BRA-i: 36 kvm





TBA: 8 kvm

BRA-e: 2.5 kvm



1:100



-  Gips himlinger / Nedkassinger m/høyde min. 2.25m
-  Gips himlinger / Nedkassinger m/høyde min. 2.40m
-  Systemhimling på teknisk rom m/høyde min. 2.20m
-  Himling på bad m/høyde min. 2.20m

2-roms

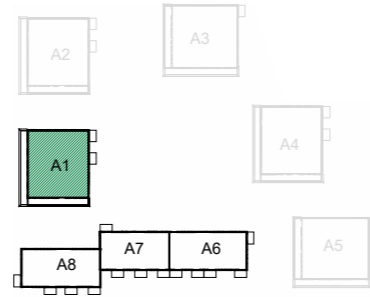
A1-H0403

Etasje: 4. etg

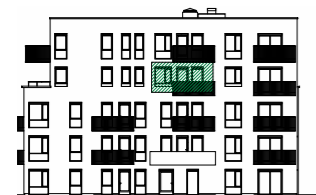
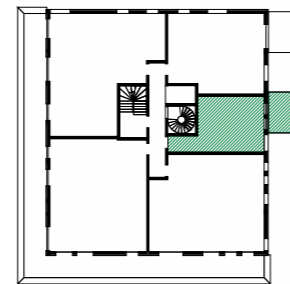
BRA-i: 36 kvm





TBA: 8 kvm

BRA-e: 2.5 kvm



1:100



-  Gips himlinger / Nedkassinger m/høyde min. 2.25m
-  Gips himlinger / Nedkassinger m/høyde min. 2.40m
-  Systemhimling på teknisk rom m/høyde min. 2.20m
-  Himling på bad m/høyde min. 2.20m

2-roms

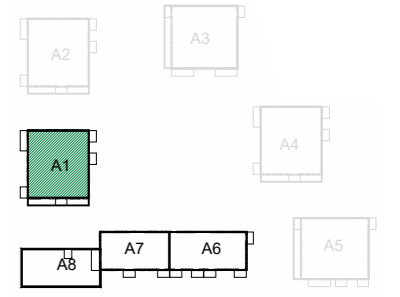
A1-H0503

Etasje: 5. etg

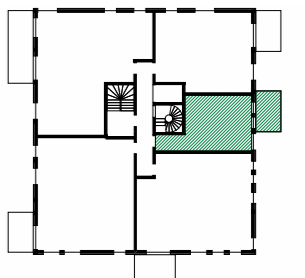
BRA-i: 36 kvm





TBA: 8 kvm

BRA-e: 5 kvm



1:100



-  Gips himlinger / Nedkassinger m/høyde min. 2.25m
-  Gips himlinger / Nedkassinger m/høyde min. 2.40m
-  Systemhimling på teknisk rom m/høyde min. 2.20m
-  Himling på bad m/høyde min. 2.20m

2-roms

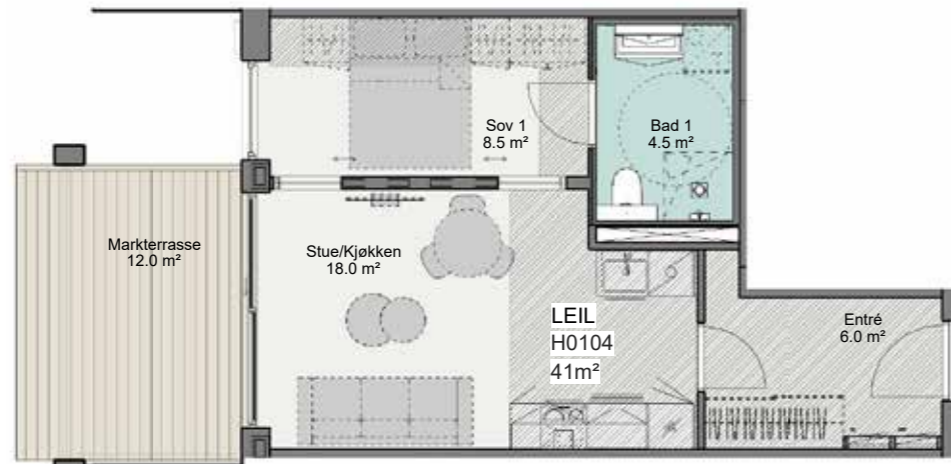
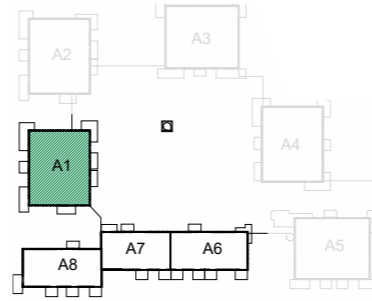
A1-H0104

Etasje: 1. etg

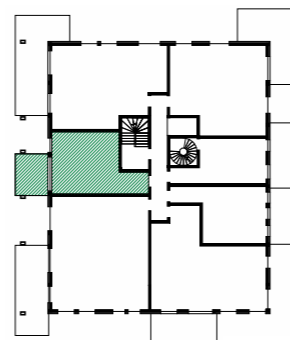
BRA-i: 41 kvm

TBA: 12 kvm

BRA-e: 2.5 kvm



1:100



- Gips himlinger / Nedkassinger m/høyde min. 2.25m
- Gips himlinger / Nedkassinger m/høyde min. 2.40m
- Systemhimling på teknisk rom m/høyde min. 2.20m
- Himling på bad m/høyde min. 2.20m

2-roms

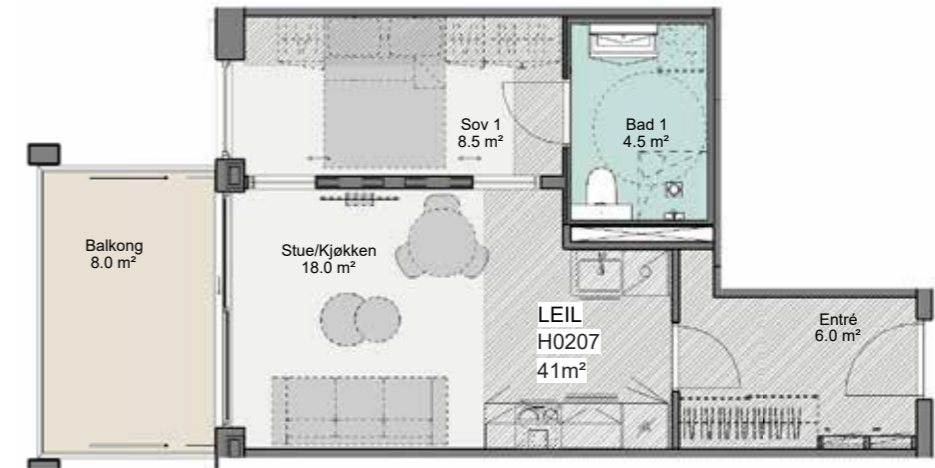
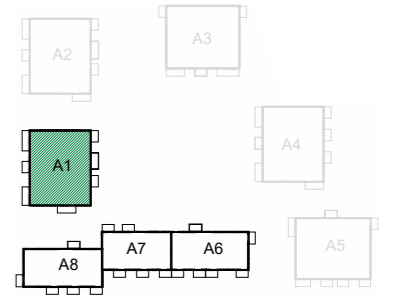
A1-H0207

Etasje: 2. etg

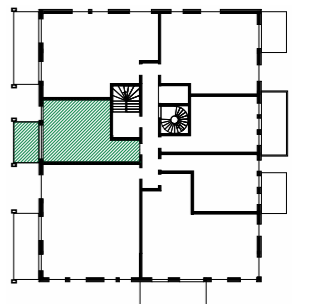
BRA-i: 41 kvm

TBA: 8 kvm

BRA-e: 2.5 kvm



1:100



- Gips himlinger / Nedkassinger m/høyde min. 2.25m
- Gips himlinger / Nedkassinger m/høyde min. 2.40m
- Systemhimling på teknisk rom m/høyde min. 2.20m
- Himling på bad m/høyde min. 2.20m

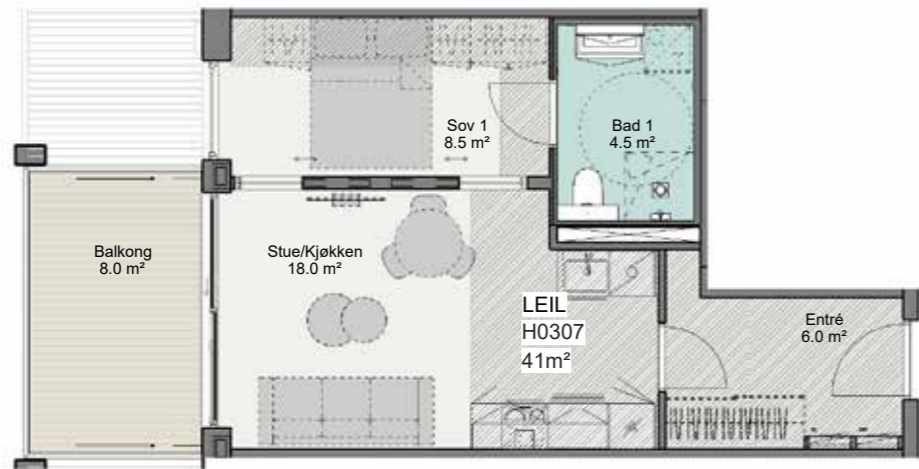
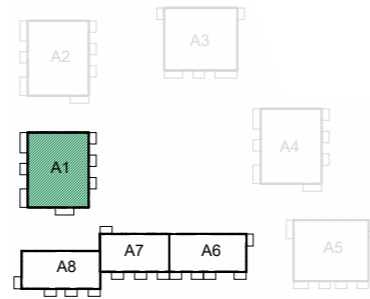
A1-H0307

Etasje: 3. etg

BRA-i: 41 kvm





TBA: 8 kvm

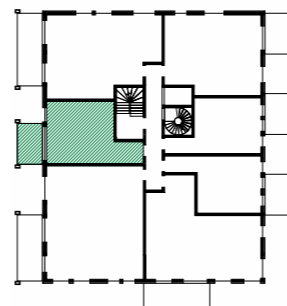
BRA-e: 2.5 kvm



1:100



-  Gips himlinger / Nedkassinger m/høyde min. 2.25m
-  Gips himlinger / Nedkassinger m/høyde min. 2.40m
-  Systemhimling på teknisk rom m/høyde min. 2.20m
-  Himling på bad m/høyde min. 2.20m



LEILIGHETER

3

ROMS

3-roms

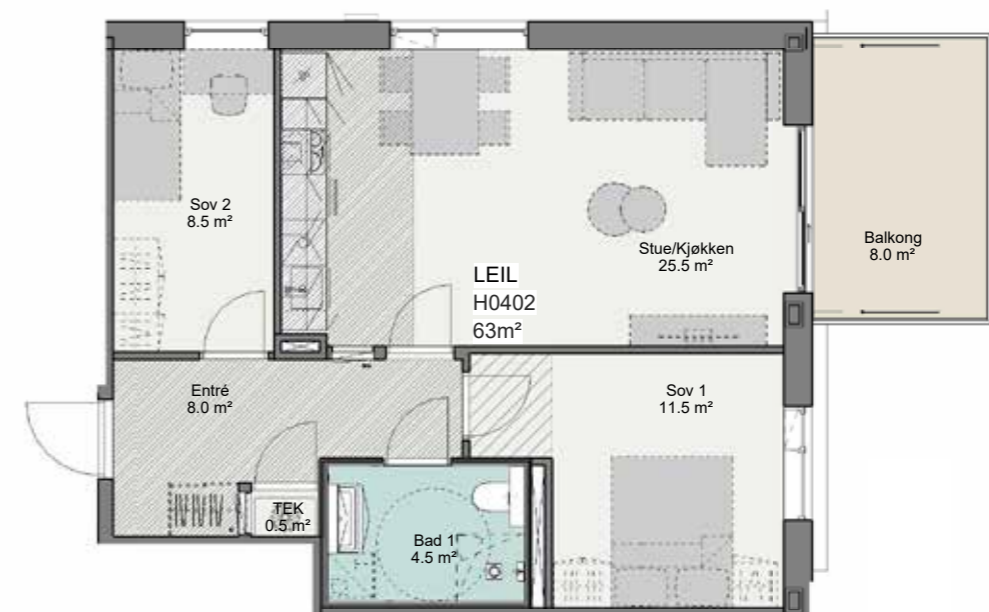
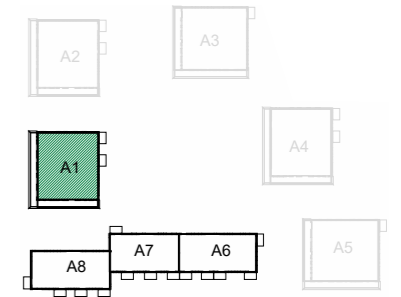
A1-H0402

Etasje: 4. etg

BRA-i: 63 kvm

TBA: 8 kvm

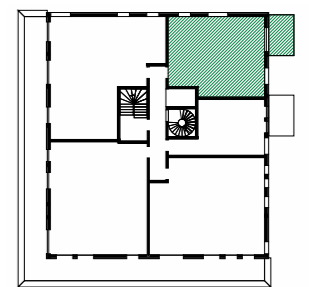
BRA-e: 5 kvm



1:100



- Gips himlinger / Nedkassinger m/høyde min. 2.25m
- Gips himlinger / Nedkassinger m/høyde min. 2.40m
- Systemhimling på teknisk rom m/høyde min. 2.20m
- Himling på bad m/høyde min. 2.20m



3-roms

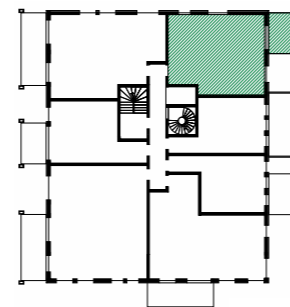
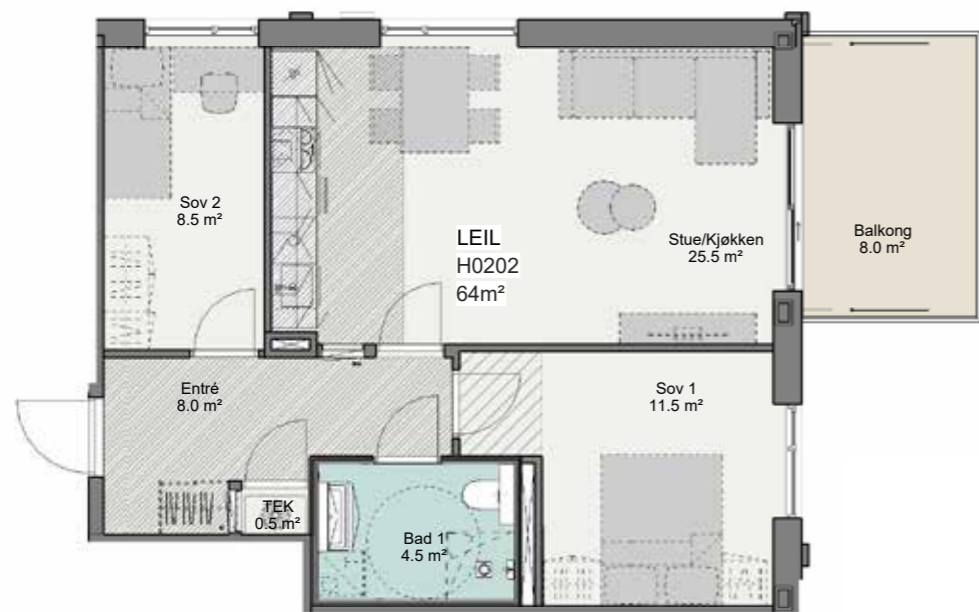
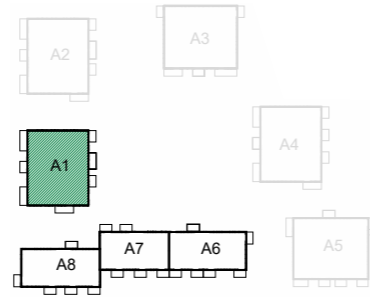
A1-H0202

Etasje: 2. etg

BRA-i: 64 kvm

TBA: 8 kvm

BRA-e: 5 kvm



- Gips himlinger / Nedkassinger m/høyde min. 2.25m
- Gips himlinger / Nedkassinger m/høyde min. 2.40m
- Systemhimling på teknisk rom m/høyde min. 2.20m
- Himling på bad m/høyde min. 2.20m



3-roms

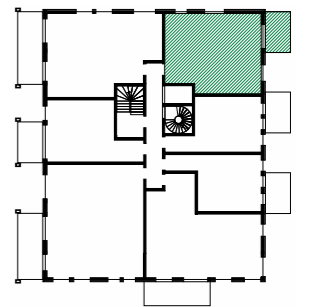
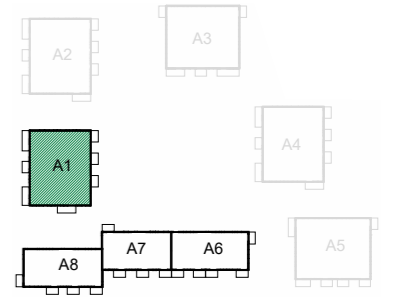
A1-H0302

Etasje: 3. etg

BRA-i: 64 kvm

TBA: 8 kvm

BRA-e: 5 kvm



- Gips himlinger / Nedkassinger m/høyde min. 2.25m
- Gips himlinger / Nedkassinger m/høyde min. 2.40m
- Systemhimling på teknisk rom m/høyde min. 2.20m
- Himling på bad m/høyde min. 2.20m



3-roms

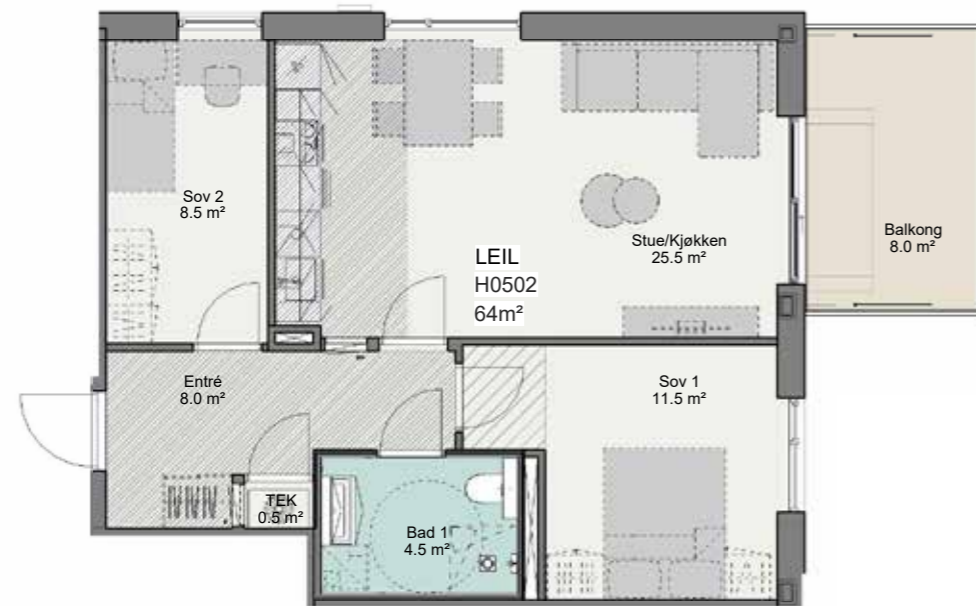
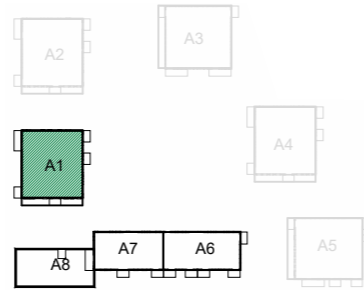
A1-H0502

Etasje: 5. etg

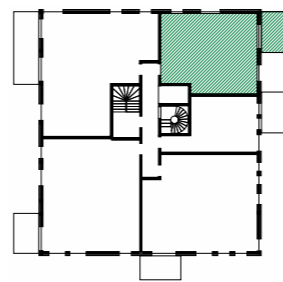
BRA-i: 64 kvm

TBA: 8 kvm

BRA-e: 5 kvm



1:100



- Gips himlinger / Nedkassinger m/høyde min. 2.25m
- Gips himlinger / Nedkassinger m/høyde min. 2.40m
- Systemhimling på teknisk rom m/høyde min. 2.20m
- Himling på bad m/høyde min. 2.20m

3-roms

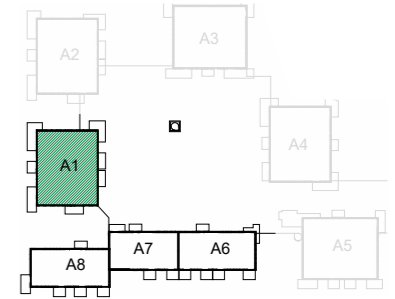
A1-H0106

Etasje: 1. etg

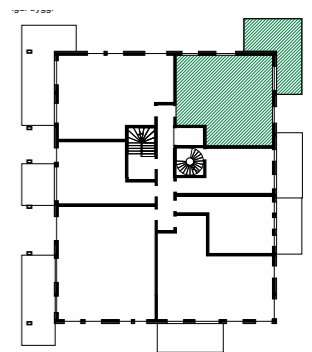
BRA-i: 70 kvm

TBA: 25 kvm

BRA-e: 5 kvm



1:100



- Gips himlinger / Nedkassinger m/høyde min. 2.25m
- Gips himlinger / Nedkassinger m/høyde min. 2.40m
- Systemhimling på teknisk rom m/høyde min. 2.20m
- Himling på bad m/høyde min. 2.20m

3-roms

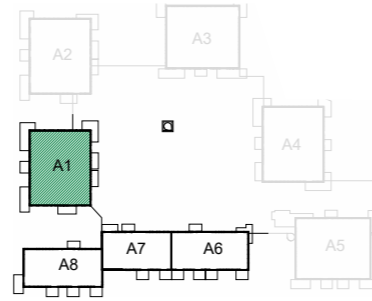
A1-H0105

Etasje: 1. etg

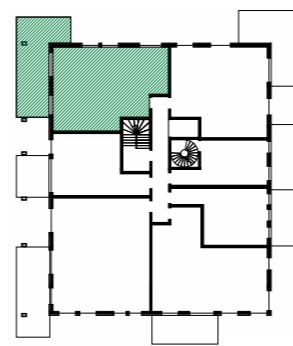
BRA-i: 74 kvm

TBA: 32 kvm

BRA-e: 5 kvm



- Gips himlinger / Nedkassinger m/høyde min. 2.25m
- Gips himlinger / Nedkassinger m/høyde min. 2.40m
- Systemhimling på teknisk rom m/høyde min. 2.20m
- Himling på bad m/høyde min. 2.20m



3-roms

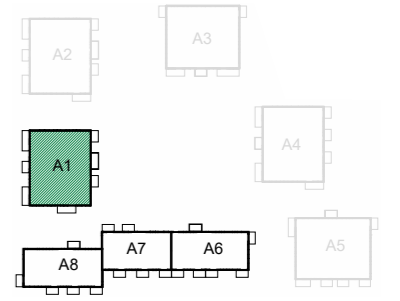
A1-H0201

Etasje: 2. etg

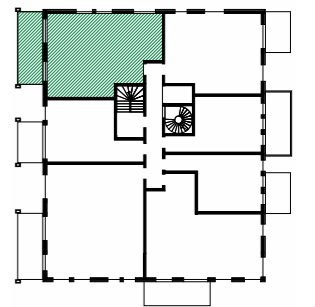
BRA-i: 74 kvm

TBA: 15 kvm

BRA-e: 5 kvm



- Gips himlinger / Nedkassinger m/høyde min. 2.25m
- Gips himlinger / Nedkassinger m/høyde min. 2.40m
- Systemhimling på teknisk rom m/høyde min. 2.20m
- Himling på bad m/høyde min. 2.20m



3-roms

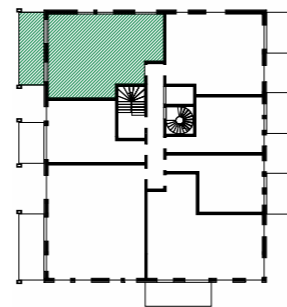
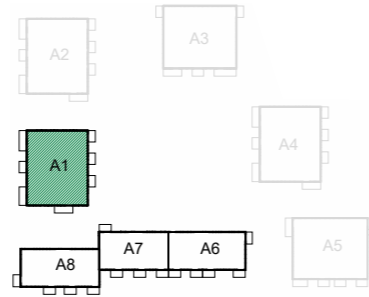
A1-H0301





Etasje: 3. etg

BRA-i: 74 kvm

TBA: 15 kvm

BRA-e: 2.5 kvm



-  Gips himlinger / Nedkassinger m/høyde min. 2.25m
-  Gips himlinger / Nedkassinger m/høyde min. 2.40m
-  Systemhimling på teknisk rom m/høyde min. 2.20m
-  Himling på bad m/høyde min. 2.20m

3-roms

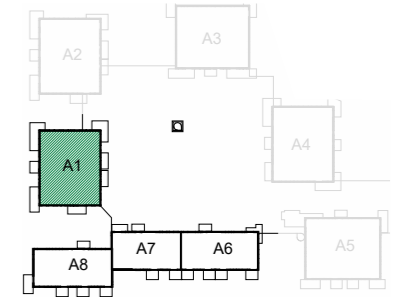
A1-H0102





Etasje: 1. etg

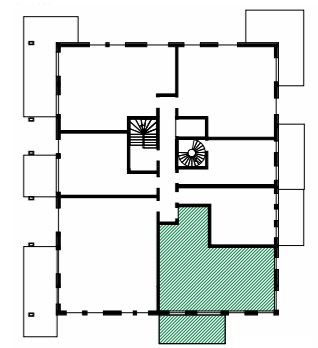
BRA-i: 78 kvm

TBA: 16 kvm

BRA-e: 5 kvm



-  Gips himlinger / Nedkassinger m/høyde min. 2.25m
-  Gips himlinger / Nedkassinger m/høyde min. 2.40m
-  Systemhimling på teknisk rom m/høyde min. 2.20m
-  Himling på bad m/høyde min. 2.20m



3-roms

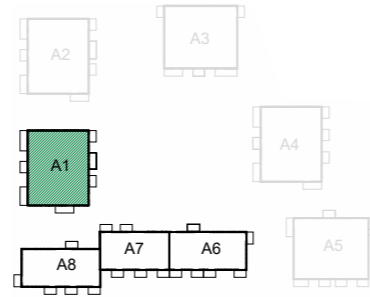
A1-H0205

Etasje: 2. etg

BRA-i: 78 kvm

TBA: 13 kvm

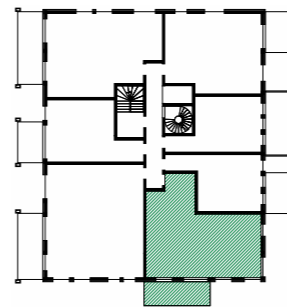
BRA-e: 5 kvm



1:100



- Gips himlinger / Nedkassinger m/høyde min. 2.25m
- Gips himlinger / Nedkassinger m/høyde min. 2.40m
- Systemhimling på teknisk rom m/høyde min. 2.20m
- Himling på bad m/høyde min. 2.20m



3-roms

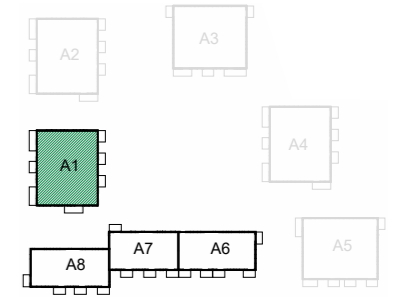
A1-H0305

Etasje: 3. etg

BRA-i: 78 kvm

TBA: 13 kvm

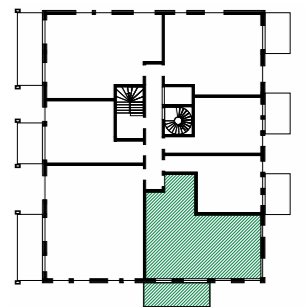
BRA-e: 5 kvm



1:100



- Gips himlinger / Nedkassinger m/høyde min. 2.25m
- Gips himlinger / Nedkassinger m/høyde min. 2.40m
- Systemhimling på teknisk rom m/høyde min. 2.20m
- Himling på bad m/høyde min. 2.20m



LEILIGHETER

4

ROMS

4-roms

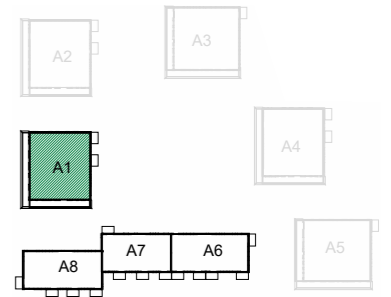
A1-H0404

Etasje: 4. etg

BRA-i: 91 kvm





TBA: 23 kvm

BRA-e: 5 kvm



1:100



-  Gips himlinger / Nedkassinger m/høyde min. 2.25m
-  Gips himlinger / Nedkassinger m/høyde min. 2.40m
-  Systemhimling på teknisk rom m/høyde min. 2.20m
-  Himling på bad m/høyde min. 2.20m



4-roms

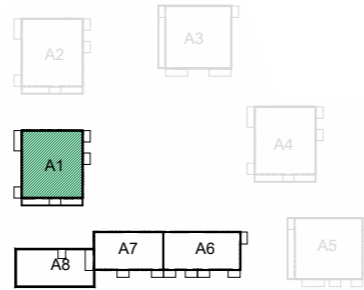
A1-H0504

Etasje: 5. etg

BRA-i: 92 kvm

TBA: 8 kvm

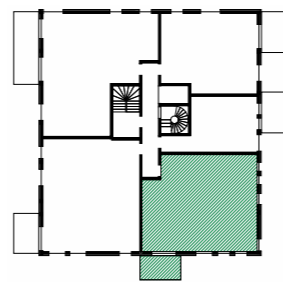
BRA-e: 5 kvm



1:100



- Gips himlinger / Nedkassinger m/høyde min. 2.25m
- Gips himlinger / Nedkassinger m/høyde min. 2.40m
- Systemhimling på teknisk rom m/høyde min. 2.20m
- Himling på bad m/høyde min. 2.20m



4-roms

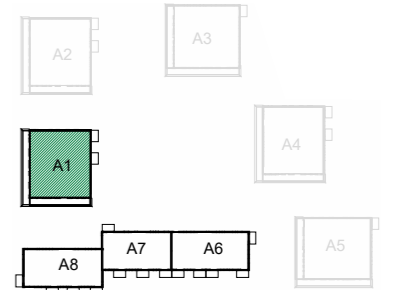
A1-H0405

Etasje: 4. etg

BRA-i: 93 kvm

TBA: 47 kvm

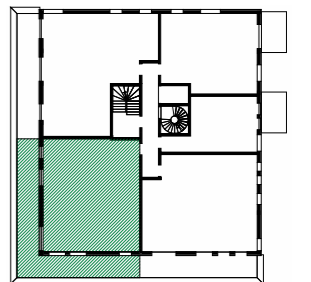
BRA-e: 5 kvm



1:100



- Gips himlinger / Nedkassinger m/høyde min. 2.25m
- Gips himlinger / Nedkassinger m/høyde min. 2.40m
- Systemhimling på teknisk rom m/høyde min. 2.20m
- Himling på bad m/høyde min. 2.20m



4-roms

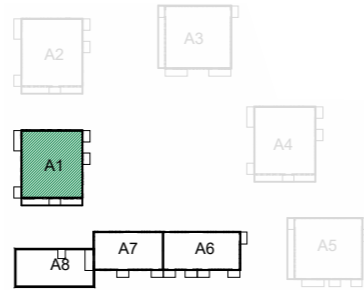
A1-H0505

Etasje: 5. etg

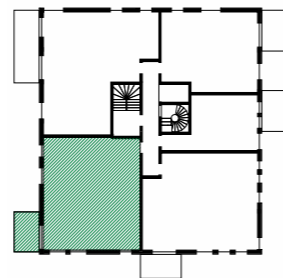
BRA-i: 93 kvm

TBA: 8 kvm

BRA-e: 5 kvm



1:100



- Gips himlinger / Nedkassinger m/høyde min. 2.25m
- Gips himlinger / Nedkassinger m/høyde min. 2.40m
- Systemhimling på teknisk rom m/høyde min. 2.20m
- Himling på bad m/høyde min. 2.20m



4-roms

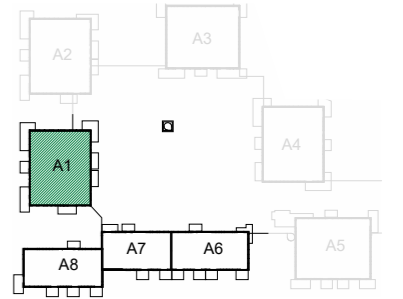
A1-H0103

Etasje: 1. etg

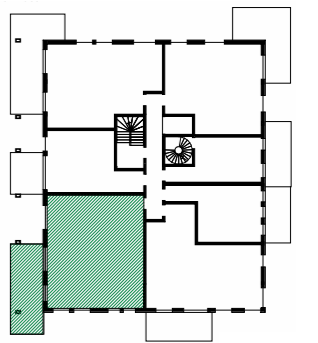
BRA-i: 94 kvm

TBA: 25 kvm

BRA-e: 5 kvm



1:100



- Gips himlinger / Nedkassinger m/høyde min. 2.25m
- Gips himlinger / Nedkassinger m/høyde min. 2.40m
- Systemhimling på teknisk rom m/høyde min. 2.20m
- Himling på bad m/høyde min. 2.20m



4-roms

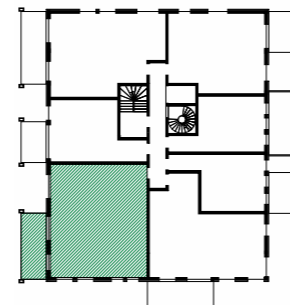
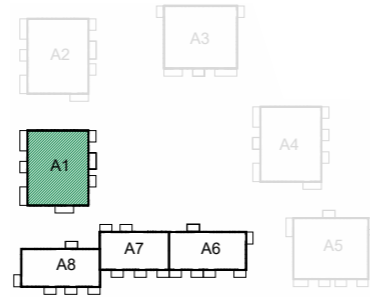
A1-H0206

Etasje: 2. etg

BRA-i: 94 kvm

TBA: 14 kvm

BRA-e: 5 kvm



- Gips himlinger / Nedkassinger m/høyde min. 2.25m
- Gips himlinger / Nedkassinger m/høyde min. 2.40m
- Systemhimling på teknisk rom m/høyde min. 2.20m
- Himling på bad m/høyde min. 2.20m

4-roms

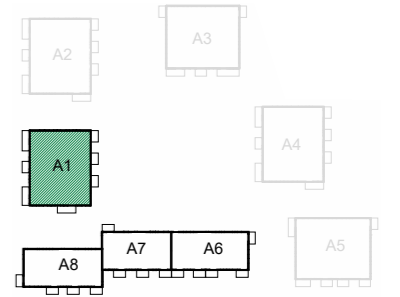
A1-H0306

Etasje: 3. etg

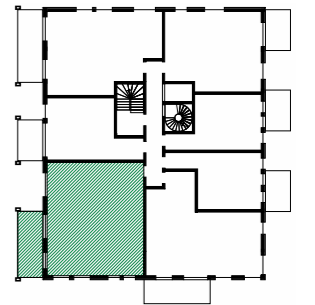
BRA-i: 94 kvm

TBA: 14 kvm

BRA-e: 5 kvm



- Gips himlinger / Nedkassinger m/høyde min. 2.25m
- Gips himlinger / Nedkassinger m/høyde min. 2.40m
- Systemhimling på teknisk rom m/høyde min. 2.20m
- Himling på bad m/høyde min. 2.20m



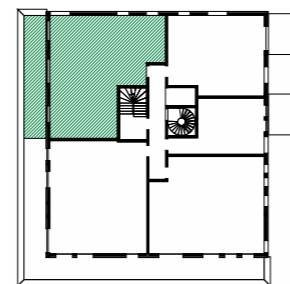
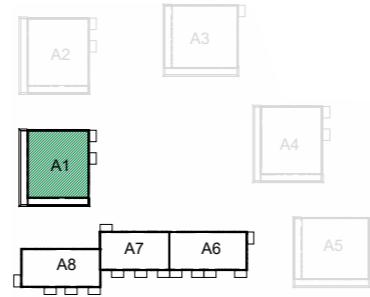
A1-H0401

Etasje: 4. etg

BRA-i: 96 kvm

TBA: 24 kvm

BRA-e: 5 kvm



- Gips himlinger / Nedkassinger m/høyde min. 2.25m
- Gips himlinger / Nedkassinger m/høyde min. 2.40m
- Systemhimling på teknisk rom m/høyde min. 2.20m
- Himling på bad m/høyde min. 2.20m



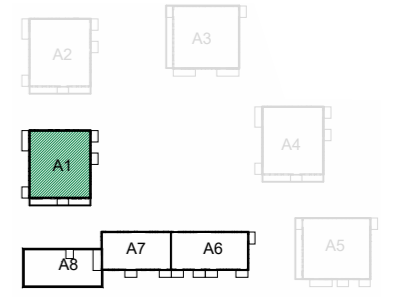
A1-H0501

Etasje: 5. etg

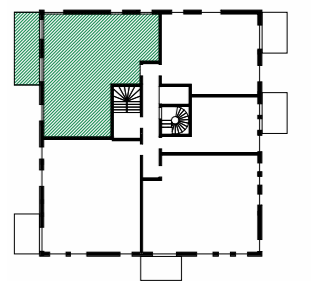
BRA-i: 96 kvm

TBA: 15 kvm

BRA-e: 5 kvm



- Gips himlinger / Nedkassinger m/høyde min. 2.25m
- Gips himlinger / Nedkassinger m/høyde min. 2.40m
- Systemhimling på teknisk rom m/høyde min. 2.20m
- Himling på bad m/høyde min. 2.20m



BYGG

A6

LEILIGHETER

2

ROMS

2-roms

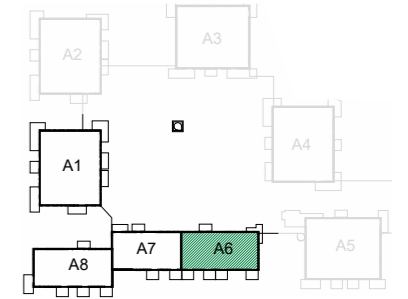
A6-H0103

Etasje: 1. etg

BRA-i: 41 kvm

TBA: 12 kvm

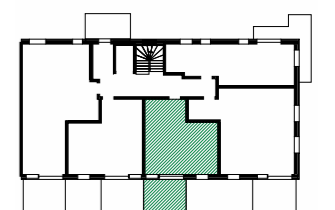
BRA-e: 2.5 kvm



1:100



- Gips himlinger / Nedkassinger m/høyde min. 2.25m
- Gips himlinger / Nedkassinger m/høyde min. 2.40m
- Systemhimling på teknisk rom m/høyde min. 2.20m
- Himling på bad m/høyde min. 2.20m



2-roms

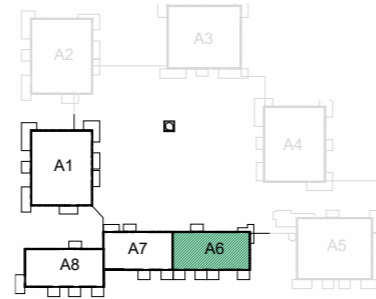
A6-H0104

Etasje: 1. etg

BRA-i: 41 kvm





TBA: 12 kvm

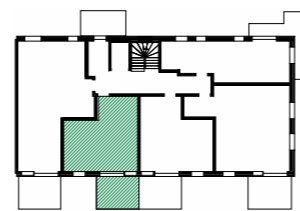
BRA-e: 2.5 kvm



1:100



-  Gips himlinger / Nedkassinger m/høyde min. 2.25m
-  Gips himlinger / Nedkassinger m/høyde min. 2.40m
-  Systemhimling på teknisk rom m/høyde min. 2.20m
-  Himling på bad m/høyde min. 2.20m



2-roms

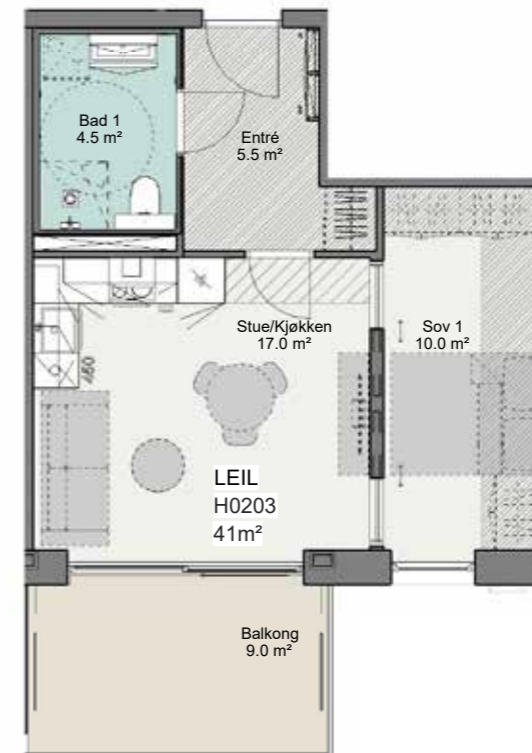
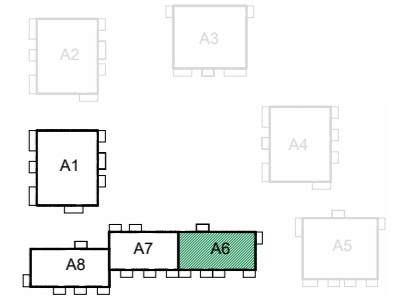
A6-H0203

Etasje: 2. etg

BRA-i: 41 kvm





TBA: 9 kvm

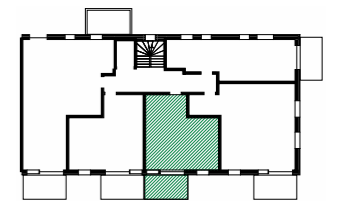
BRA-e: 2.5 kvm



1:100



-  Gips himlinger / Nedkassinger m/høyde min. 2.25m
-  Gips himlinger / Nedkassinger m/høyde min. 2.40m
-  Systemhimling på teknisk rom m/høyde min. 2.20m
-  Himling på bad m/høyde min. 2.20m



2-roms

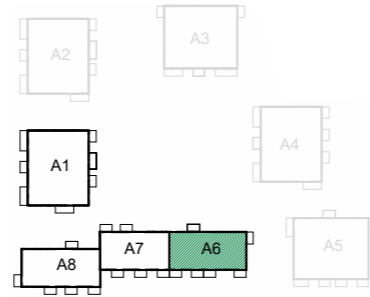
A6-H0204

Etasje: 2. etg

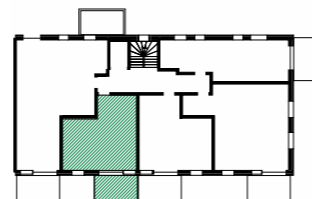
BRA-i: 41 kvm

TBA: 9 kvm

BRA-e: 2.5 kvm



1:100



- Gips himlinger / Nedkassinger m/høyde min. 2.25m
- Gips himlinger / Nedkassinger m/høyde min. 2.40m
- Systemhimling på teknisk rom m/høyde min. 2.20m
- Himling på bad m/høyde min. 2.20m

2-roms

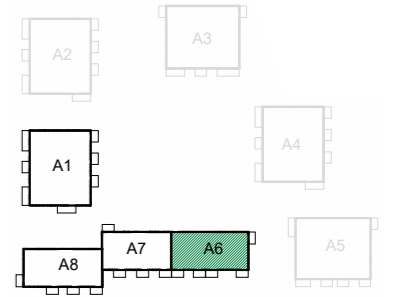
A6-H0303

Etasje: 3. etg

BRA-i: 41 kvm

TBA: 9 kvm

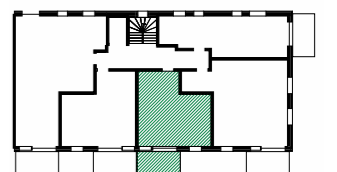
BRA-e: 2.5 kvm



1:100



- Gips himlinger / Nedkassinger m/høyde min. 2.25m
- Gips himlinger / Nedkassinger m/høyde min. 2.40m
- Systemhimling på teknisk rom m/høyde min. 2.20m
- Himling på bad m/høyde min. 2.20m



2-roms

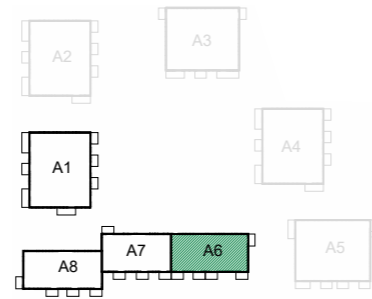
A6-H0304

Etasje: 3. etg

BRA-i: 41 kvm

TBA: 9 kvm

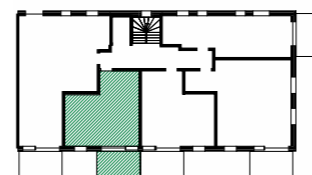
BRA-e: 2.5 kvm



1:100



- Gips himlinger / Nedkassinger m/høyde min. 2.25m
- Gips himlinger / Nedkassinger m/høyde min. 2.40m
- Systemhimling på teknisk rom m/høyde min. 2.20m
- Himling på bad m/høyde min. 2.20m



2-roms

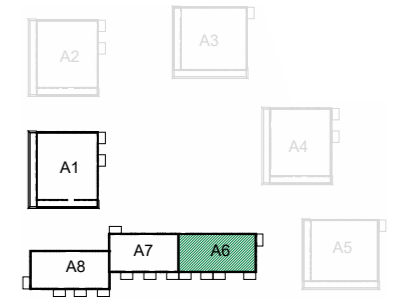
A6-H0401

Etasje: 4. etg

BRA-i: 41 kvm

TBA: 8 kvm

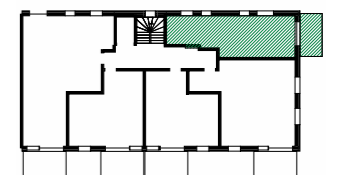
BRA-e: 2.5 kvm



1:100



- Gips himlinger / Nedkassinger m/høyde min. 2.25m
- Gips himlinger / Nedkassinger m/høyde min. 2.40m
- Systemhimling på teknisk rom m/høyde min. 2.20m
- Himling på bad m/høyde min. 2.20m



2-roms

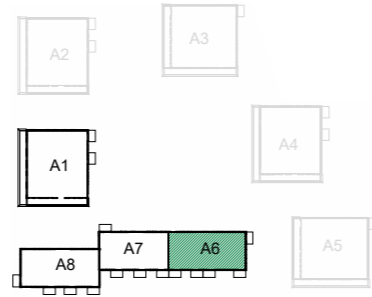
A6-H0403

Etasje: 4. etg

BRA-i: 41 kvm

TBA: 9 kvm

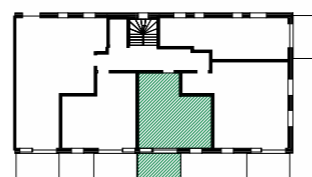
BRA-e: 2.5 kvm



1:100



- Gips himlinger / Nedkassinger m/høyde min. 2.25m
- Gips himlinger / Nedkassinger m/høyde min. 2.40m
- Systemhimling på teknisk rom m/høyde min. 2.20m
- Himling på bad m/høyde min. 2.20m



2-roms

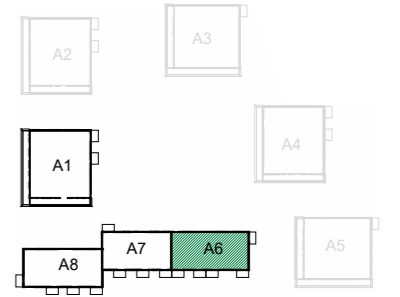
A6-H0404

Etasje: 4. etg

BRA-i: 41 kvm

TBA: 9 kvm

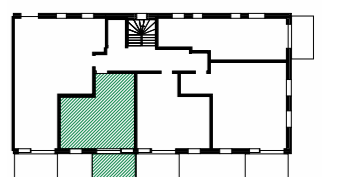
BRA-e: 2.5 kvm



1:100



- Gips himlinger / Nedkassinger m/høyde min. 2.25m
- Gips himlinger / Nedkassinger m/høyde min. 2.40m
- Systemhimling på teknisk rom m/høyde min. 2.20m
- Himling på bad m/høyde min. 2.20m



2-roms

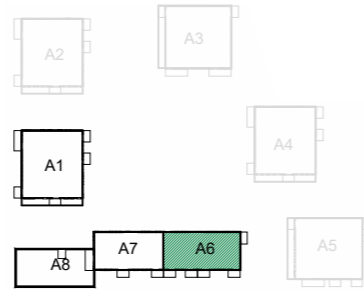
A6-H0501

Etasje: 5. etg

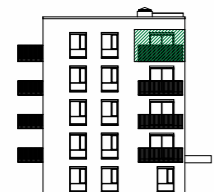
BRA-i: 41 kvm





TBA: 8 kvm

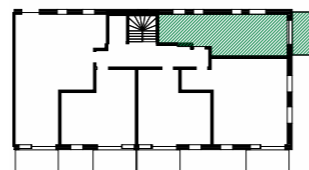
BRA-e: 2.5 kvm



1:100



-  Gips himlinger / Nedkassinger m/høyde min. 2.25m
-  Gips himlinger / Nedkassinger m/høyde min. 2.40m
-  Systemhimling på teknisk rom m/høyde min. 2.20m
-  Himling på bad m/høyde min. 2.20m



2-roms

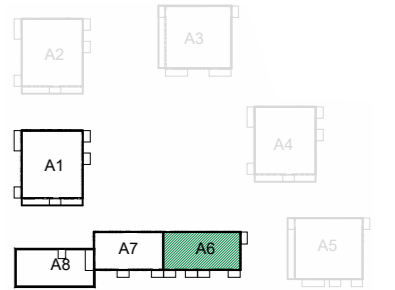
A6-H0503

Etasje: 5. etg

BRA-i: 41 kvm





TBA: 9 kvm

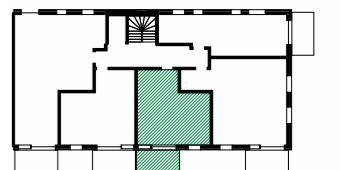
BRA-e: 2.5 kvm



1:100



-  Gips himlinger / Nedkassinger m/høyde min. 2.25m
-  Gips himlinger / Nedkassinger m/høyde min. 2.40m
-  Systemhimling på teknisk rom m/høyde min. 2.20m
-  Himling på bad m/høyde min. 2.20m



2-roms

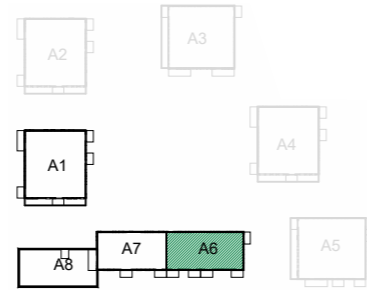
A6-H0504

Etasje: 5. etg

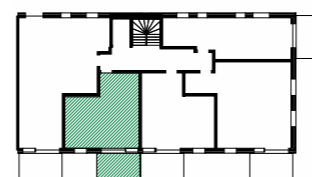
BRA-i: 41 kvm

TBA: 9 kvm

BRA-e: 2.5 kvm



- Gips himlinger / Nedkassinger m/høyde min. 2.25m
- Gips himlinger / Nedkassinger m/høyde min. 2.40m
- Systemhimling på teknisk rom m/høyde min. 2.20m
- Himling på bad m/høyde min. 2.20m



2-roms

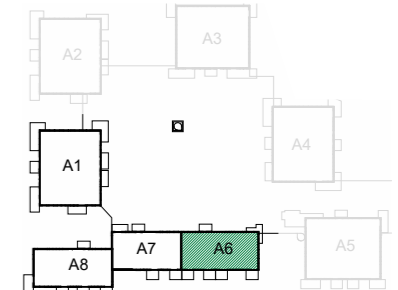
A6-H0101

Etasje: 1. etg

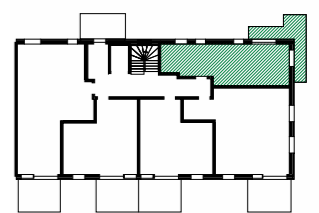
BRA-i: 42 kvm

TBA: 13 kvm

BRA-e: 2.5 kvm



- Gips himlinger / Nedkassinger m/høyde min. 2.25m
- Gips himlinger / Nedkassinger m/høyde min. 2.40m
- Systemhimling på teknisk rom m/høyde min. 2.20m
- Himling på bad m/høyde min. 2.20m



2-roms

A6-H0201

Etasje: 2. etg

BRA-i: 42 kvm

TBA: 8 kvm

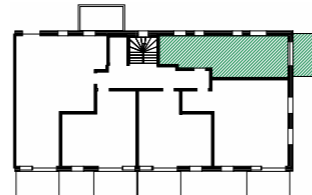
BRA-e: 2.5 kvm



1:100



- Gips himlinger / Nedkassinger m/høyde min. 2.25m
- Gips himlinger / Nedkassinger m/høyde min. 2.40m
- Systemhimling på teknisk rom m/høyde min. 2.20m
- Himling på bad m/høyde min. 2.20m



2-roms

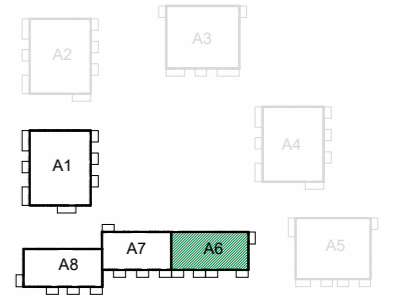
A6-H0301

Etasje: 3. etg

BRA-i: 42 kvm

TBA: 8 kvm

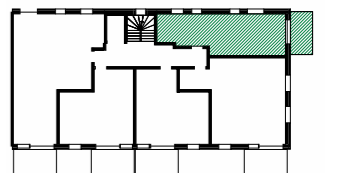
BRA-e: 2.5 kvm



1:100



- Gips himlinger / Nedkassinger m/høyde min. 2.25m
- Gips himlinger / Nedkassinger m/høyde min. 2.40m
- Systemhimling på teknisk rom m/høyde min. 2.20m
- Himling på bad m/høyde min. 2.20m



LEILIGHETER

3

ROMS

3-roms

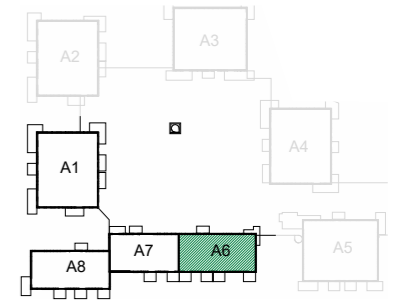
A6-H0102

Etasje: 1. etg

BRA-i: 61 kvm

TBA: 12 kvm

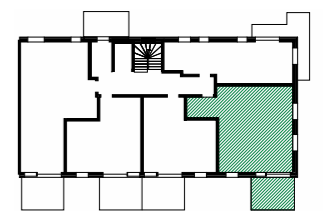
BRA-e: 5 kvm



1:100



- Gips himlinger / Nedkassinger m/høyde min. 2.25m
- Gips himlinger / Nedkassinger m/høyde min. 2.40m
- Systemhimling på teknisk rom m/høyde min. 2.20m
- Himling på bad m/høyde min. 2.20m



3-roms

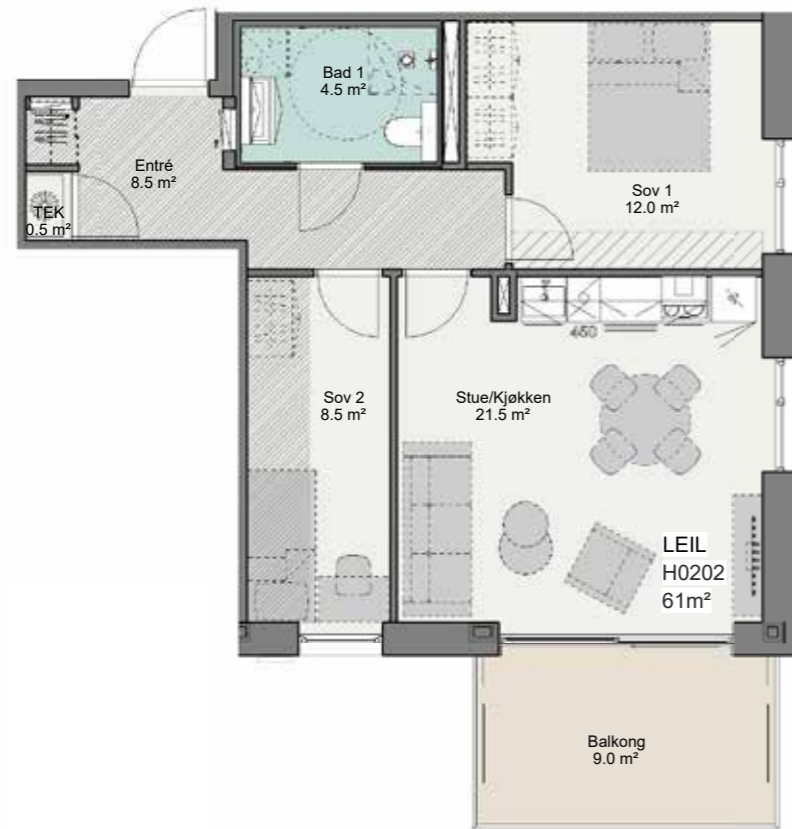
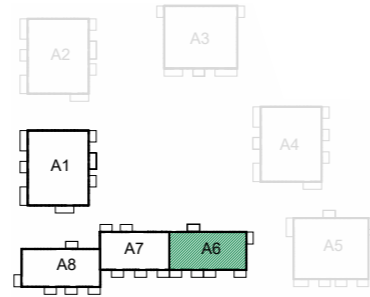
A6-H0202

Etasje: 2. etg

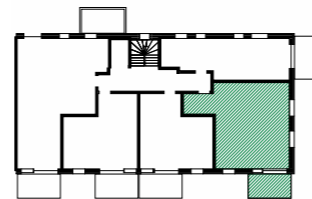
BRA-i: 61 kvm

TBA: 9 kvm

BRA-e: 5 kvm



1:100



- Gips himlinger / Nedkassinger m/høyde min. 2.25m
- Gips himlinger / Nedkassinger m/høyde min. 2.40m
- Systemhimling på teknisk rom m/høyde min. 2.20m
- Himling på bad m/høyde min. 2.20m



3-roms

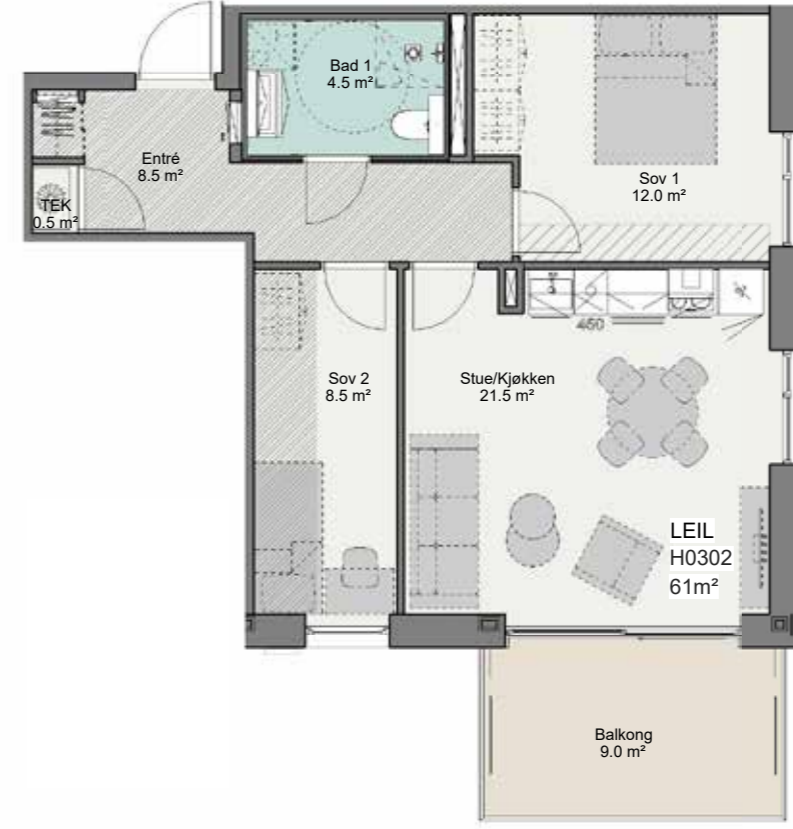
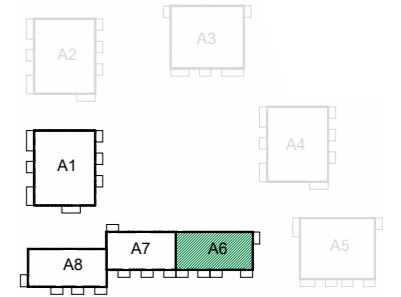
A6-H0302

Etasje: 3. etg

BRA-i: 61 kvm

TBA: 9 kvm

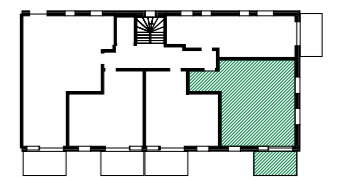
BRA-e: 5 kvm



1:100



- Gips himlinger / Nedkassinger m/høyde min. 2.25m
- Gips himlinger / Nedkassinger m/høyde min. 2.40m
- Systemhimling på teknisk rom m/høyde min. 2.20m
- Himling på bad m/høyde min. 2.20m



3-roms

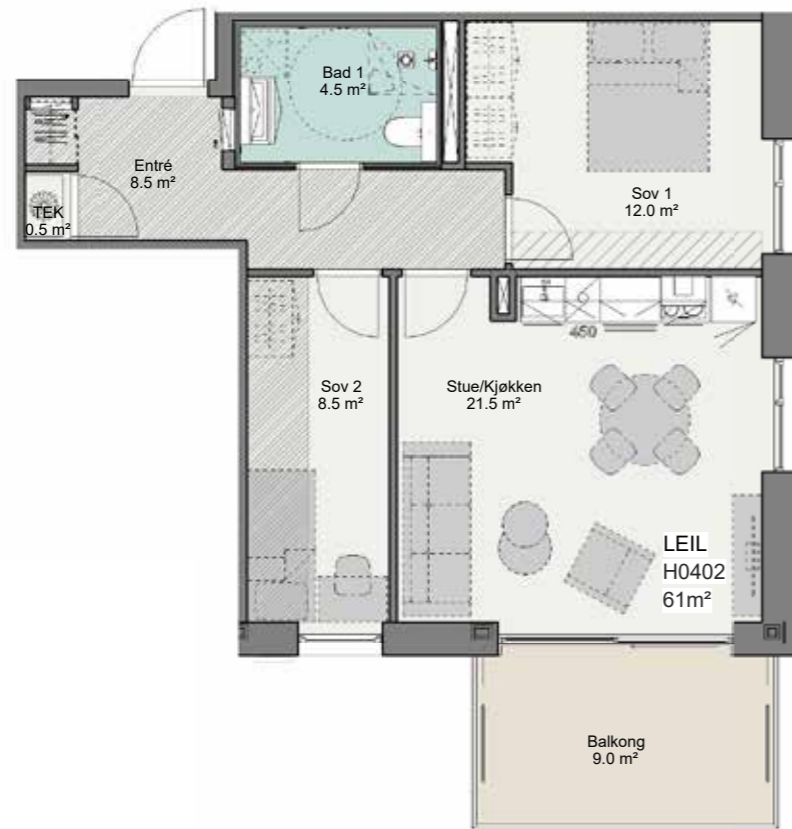
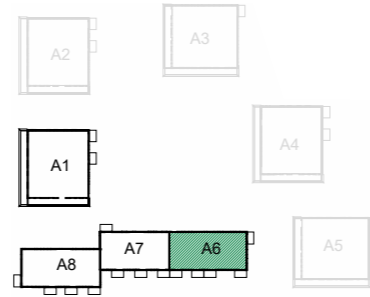
A6-H0402

Etasje: 4. etg

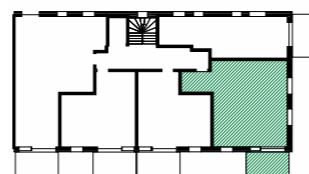
BRA-i: 61 kvm





TBA: 9kvm

BRA-e: 5 kvm



1:100



-  Gips himlinger / Nedkassinger m/høyde min. 2.25m
-  Gips himlinger / Nedkassinger m/høyde min. 2.40m
-  Systemhimling på teknisk rom m/høyde min. 2.20m
-  Himling på bad m/høyde min. 2.20m

3-roms

A6-H0502

Etasje: 5. etg

BRA-i: 61 kvm





TBA: 9 kvm

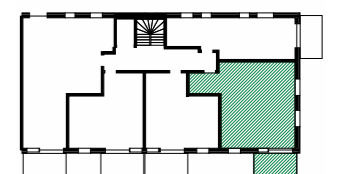
BRA-e: 5 kvm



1:100



-  Gips himlinger / Nedkassinger m/høyde min. 2.25m
-  Gips himlinger / Nedkassinger m/høyde min. 2.40m
-  Systemhimling på teknisk rom m/høyde min. 2.20m
-  Himling på bad m/høyde min. 2.20m



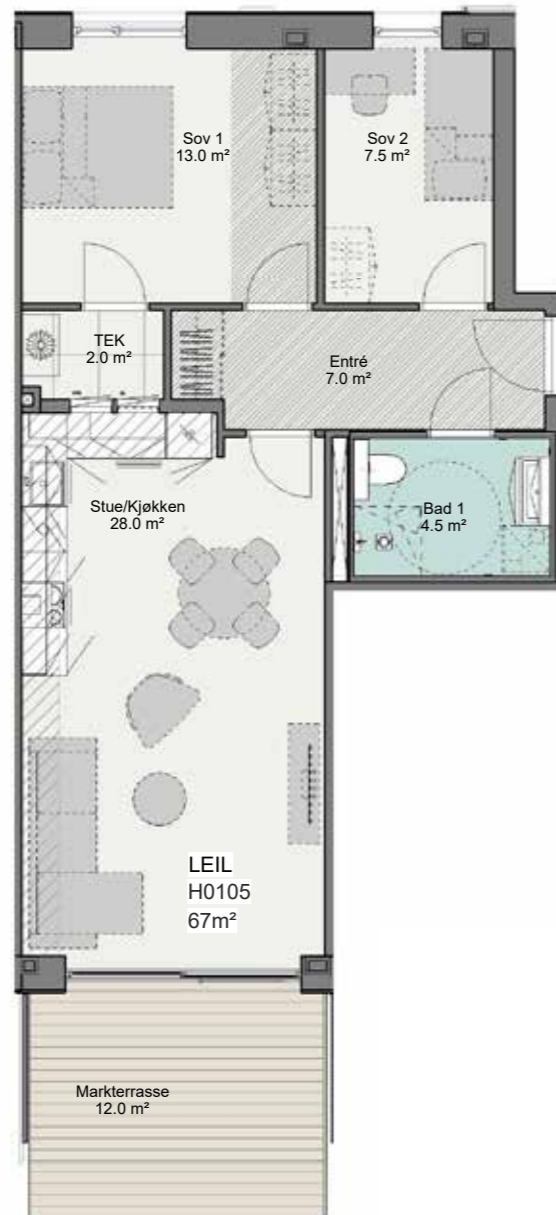
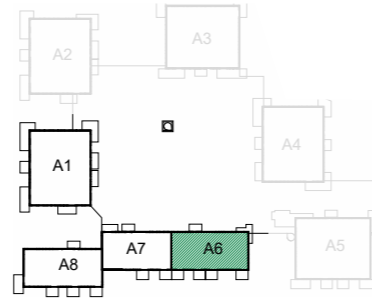
A6-H0105

Etasje: 1. etg

BRA-i: 67 kvm





TBA: 12 kvm

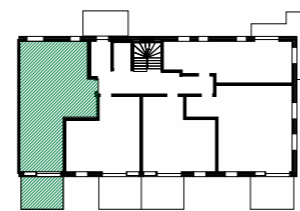
BRA-e: 5 kvm



1:100



-  Gips himlinger / Nedkassinger m/høyde min. 2.25m
-  Gips himlinger / Nedkassinger m/høyde min. 2.40m
-  Systemhimling på teknisk rom m/høyde min. 2.20m
-  Himling på bad m/høyde min. 2.20m



LEILIGHETER

4

ROMS

4-roms

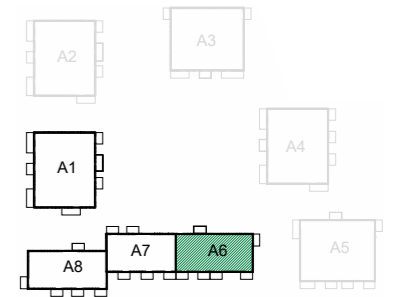
A6-H0205

Etasje: 2. etg

BRA-i: 75 kvm

TBA: 9 kvm

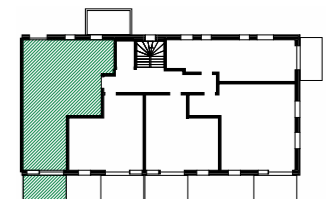
BRA-e: 5 kvm



1:100



- Gips himlinger / Nedkassinger m/høyde min. 2.25m
- Gips himlinger / Nedkassinger m/høyde min. 2.40m
- Systemhimling på teknisk rom m/høyde min. 2.20m
- Himling på bad m/høyde min. 2.20m



4-roms

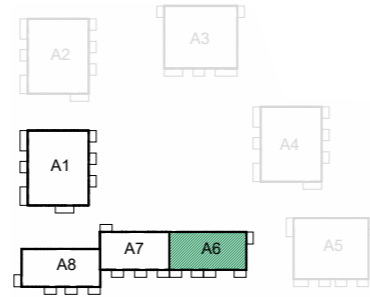
A6-H0305

Etasje: 3. etg

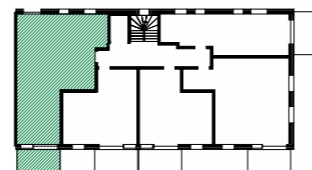
BRA-i: 75 kvm

TBA: 9 kvm

BRA-e: 5 kvm



- Gips himlinger / Nedkassinger m/høyde min. 2.25m
- Gips himlinger / Nedkassinger m/høyde min. 2.40m
- Systemhimling på teknisk rom m/høyde min. 2.20m
- Himling på bad m/høyde min. 2.20m



4-roms

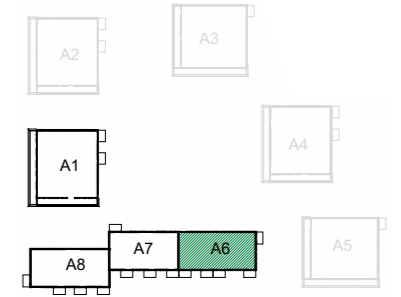
A6-H0405

Etasje: 4. etg

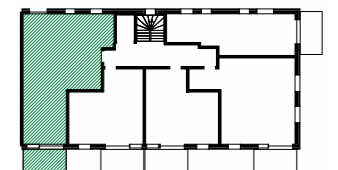
BRA-i: 75 kvm

TBA: 9 kvm

BRA-e: 5 kvm



- Gips himlinger / Nedkassinger m/høyde min. 2.25m
- Gips himlinger / Nedkassinger m/høyde min. 2.40m
- Systemhimling på teknisk rom m/høyde min. 2.20m
- Himling på bad m/høyde min. 2.20m



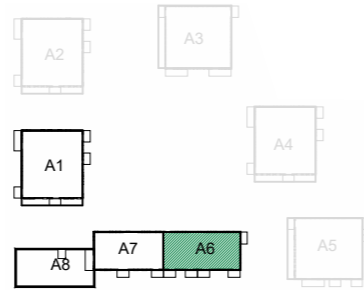
A6-H0505

Etasje: 5. etg

BRA-i: 75 kvm

TBA: 9 kvm

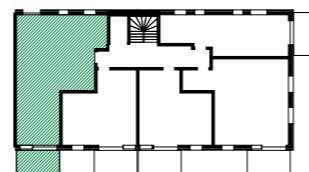
BRA-e: 5 kvm



1:100



- Gips himlinger / Nedkassinger m/høyde min. 2.25m
- Gips himlinger / Nedkassinger m/høyde min. 2.40m
- Systemhimling på teknisk rom m/høyde min. 2.20m
- Himling på bad m/høyde min. 2.20m



BYGG

A7

LEILIGHETER

2

ROMS

2-roms

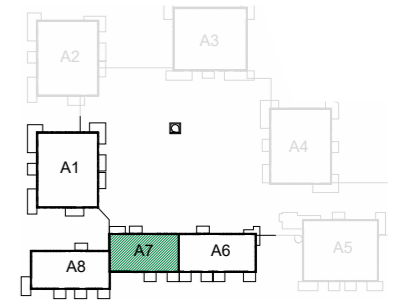
A7-H0102

Etasje: 1. etg

BRA-i: 38 kvm

TBA: 12 kvm

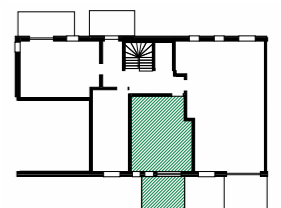
BRA-e: 2.5 kvm



1:100



- Gips himlinger / Nedkassinger m/høyde min. 2.25m
- Gips himlinger / Nedkassinger m/høyde min. 2.40m
- Systemhimling på teknisk rom m/høyde min. 2.20m
- Himling på bad m/høyde min. 2.20m



2-roms

A7-H0104

Etasje: 1. etg

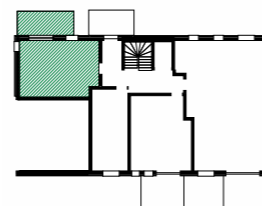
BRA-i: 38 kvm





TBA: 12 kvm

BRA-e: 2.5 kvm



1:100



-  Gips himlinger / Nedkassinger m/høyde min. 2.25m
-  Gips himlinger / Nedkassinger m/høyde min. 2.40m
-  Systemhimling på teknisk rom m/høyde min. 2.20m
-  Himling på bad m/høyde min. 2.20m



2-roms

A7-H0202

Etasje: 2. etg





BRA-i: 41 kvm

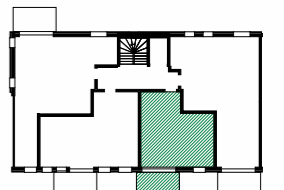
TBA: 9 kvm

BRA-e: 2.5 kvm



1:100

-  Gips himlinger / Nedkassinger m/høyde min. 2.25m
-  Gips himlinger / Nedkassinger m/høyde min. 2.40m
-  Systemhimling på teknisk rom m/høyde min. 2.20m
-  Himling på bad m/høyde min. 2.20m



2-roms

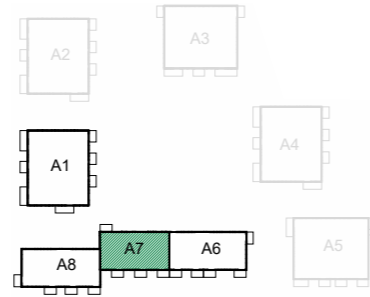
A7-H0302

Etasje: 3. etg

BRA-i: 41 kvm

TBA: 9 kvm

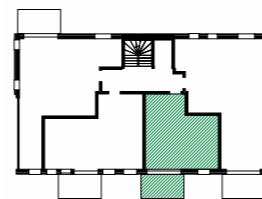
BRA-e: 2.5 kvm



1:100



- Gips himlinger / Nedkassinger m/høyde min. 2.25m
- Gips himlinger / Nedkassinger m/høyde min. 2.40m
- Systemhimling på teknisk rom m/høyde min. 2.20m
- Himling på bad m/høyde min. 2.20m



2-roms

A7-H0402

Etasje: 4. etg

BRA-i: 41 kvm

TBA: 9 kvm

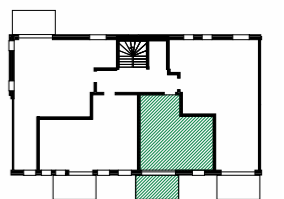
BRA-e: 2.5 kvm



1:100



- Gips himlinger / Nedkassinger m/høyde min. 2.25m
- Gips himlinger / Nedkassinger m/høyde min. 2.40m
- Systemhimling på teknisk rom m/høyde min. 2.20m
- Himling på bad m/høyde min. 2.20m



LEILIGHETER

3

ROMS

3-roms

A7-H0203

Etasje: 2. etg

BRA-i: 53 kvm



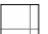

TBA: 9 kvm

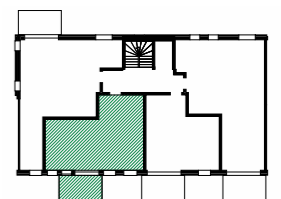
BRA-e: 5 kvm



1:100



-  Gips himlinger / Nedkassinger m/høyde min. 2.25m
-  Gips himlinger / Nedkassinger m/høyde min. 2.40m
-  Systemhimling på teknisk rom m/høyde min. 2.20m
-  Himling på bad m/høyde min. 2.20m



3-roms

A7-H0303

Etasje: 3. etg

BRA-i: 53 kvm

TBA: 9 kvm

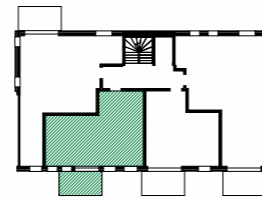
BRA-e: 5 kvm



1:100



- Gips himlinger / Nedkassinger m/høyde min. 2.25m
- Gips himlinger / Nedkassinger m/høyde min. 2.40m
- Systemhimling på teknisk rom m/høyde min. 2.20m
- Himling på bad m/høyde min. 2.20m



3-roms

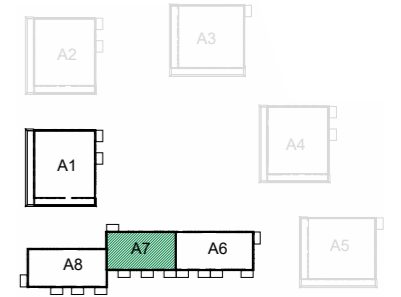
A7-H0403

Etasje: 4. etg

BRA-i: 53 kvm

TBA: 9 kvm

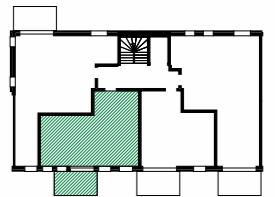
BRA-e: 5 kvm



1:100



- Gips himlinger / Nedkassinger m/høyde min. 2.25m
- Gips himlinger / Nedkassinger m/høyde min. 2.40m
- Systemhimling på teknisk rom m/høyde min. 2.20m
- Himling på bad m/høyde min. 2.20m



3-roms

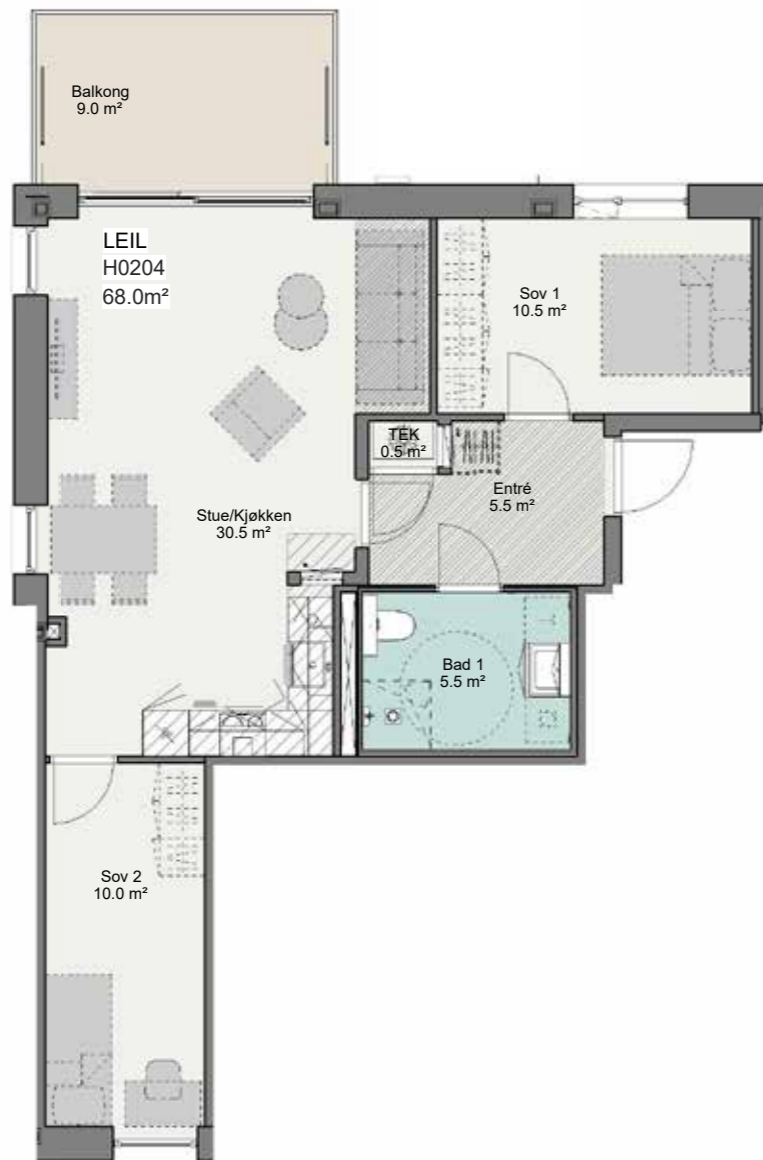
A7-H0204

Etasje: 2. etg

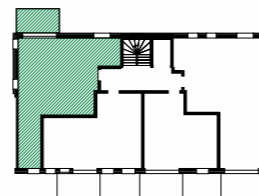
BRA-i: 69 kvm

TBA: 9 kvm

BRA-e: 5 kvm



- Gips himlinger / Nedkassinger m/høyde min. 2.25m
- Gips himlinger / Nedkassinger m/høyde min. 2.40m
- Systemhimling på teknisk rom m/høyde min. 2.20m
- Himling på bad m/høyde min. 2.20m



3-roms

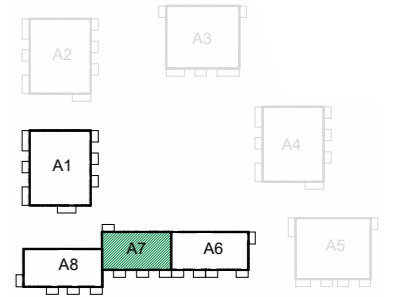
A7-H0304

Etasje: 3. etg

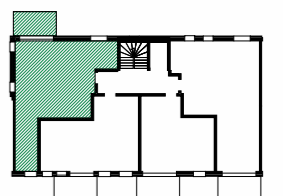
BRA-i: 69 kvm

TBA: 9 kvm

BRA-e: 5 kvm



- Gips himlinger / Nedkassinger m/høyde min. 2.25m
- Gips himlinger / Nedkassinger m/høyde min. 2.40m
- Systemhimling på teknisk rom m/høyde min. 2.20m
- Himling på bad m/høyde min. 2.20m



3-roms

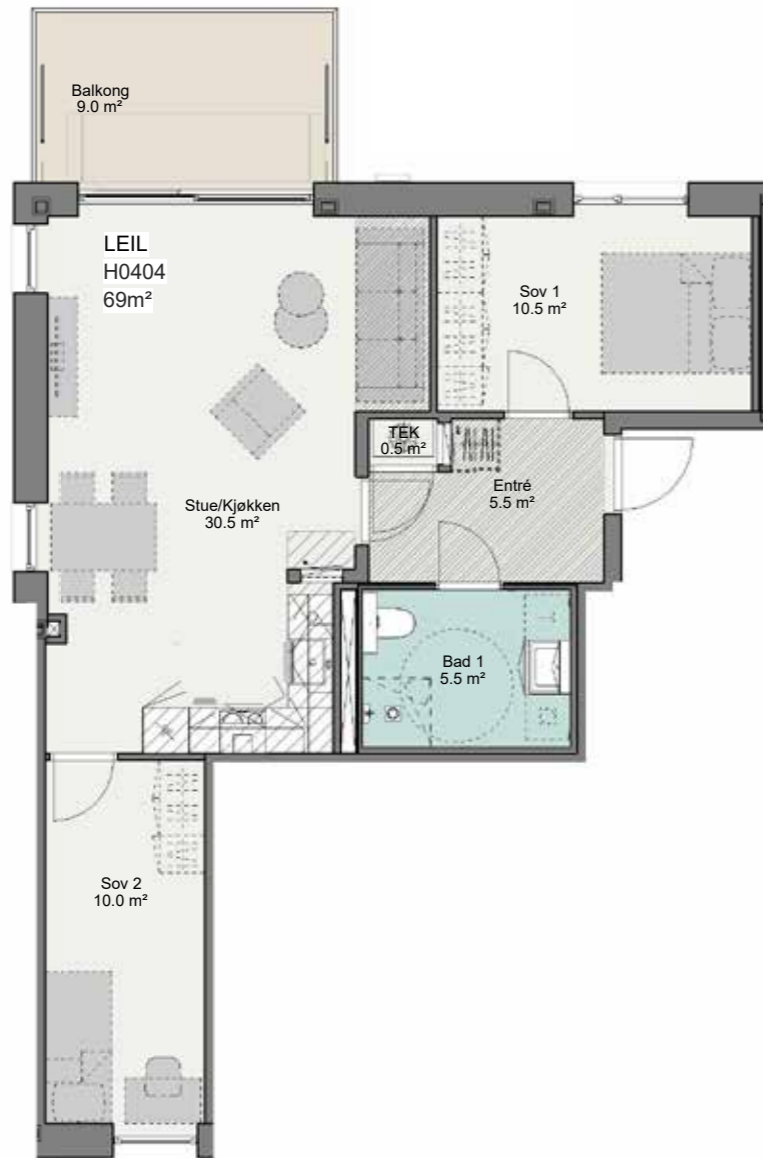
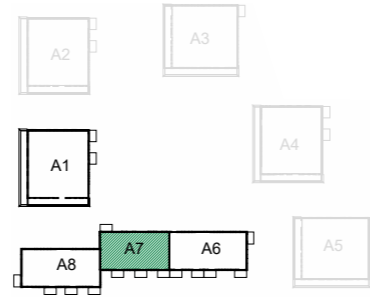
A7-H0404

Etasje: 4. etg

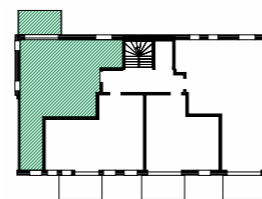
BRA-i: 69 kvm

TBA: 9 kvm

BRA-e: 5 kvm



- Gips himlinger / Nedkassinger m/høyde min. 2.25m
- Gips himlinger / Nedkassinger m/høyde min. 2.40m
- Systemhimling på teknisk rom m/høyde min. 2.20m
- Himling på bad m/høyde min. 2.20m



3-roms

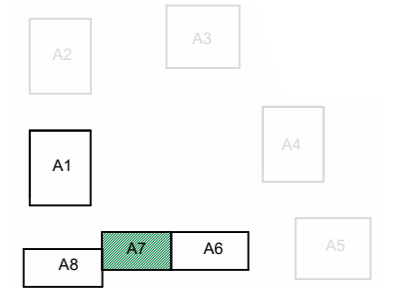
A7-H0502

Etasje: 5. etg

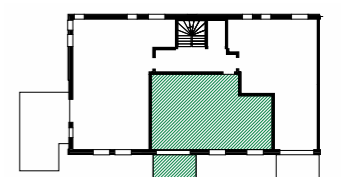
BRA-i: 72 kvm

TBA: 9 kvm

BRA-e: 5 kvm



- Gips himlinger / Nedkassinger m/høyde min. 2.25m
- Gips himlinger / Nedkassinger m/høyde min. 2.40m
- Systemhimling på teknisk rom m/høyde min. 2.20m
- Himling på bad m/høyde min. 2.20m



3-roms

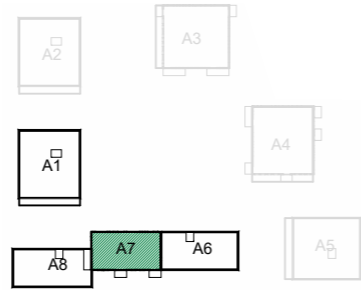
A7-H0602

Etasje: 6. etg

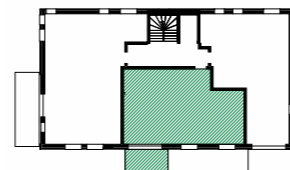
BRA-i: 72 kvm

TBA: 9 kvm

BRA-e: 5 kvm



- Gips himlinger / Nedkassinger m/høyde min. 2.25m
- Gips himlinger / Nedkassinger m/høyde min. 2.40m
- Systemhimling på teknisk rom m/høyde min. 2.20m
- Himling på bad m/høyde min. 2.20m



3-roms

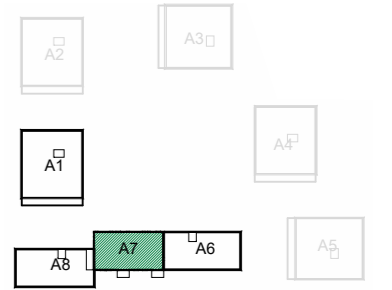
A7-H0702

Etasje: 7. etg

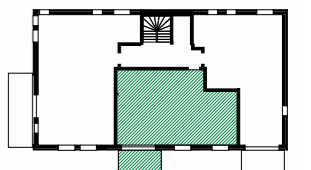
BRA-i: 72 kvm

TBA: 9 kvm

BRA-e: 5 kvm



- Gips himlinger / Nedkassinger m/høyde min. 2.25m
- Gips himlinger / Nedkassinger m/høyde min. 2.40m
- Systemhimling på teknisk rom m/høyde min. 2.20m
- Himling på bad m/høyde min. 2.20m



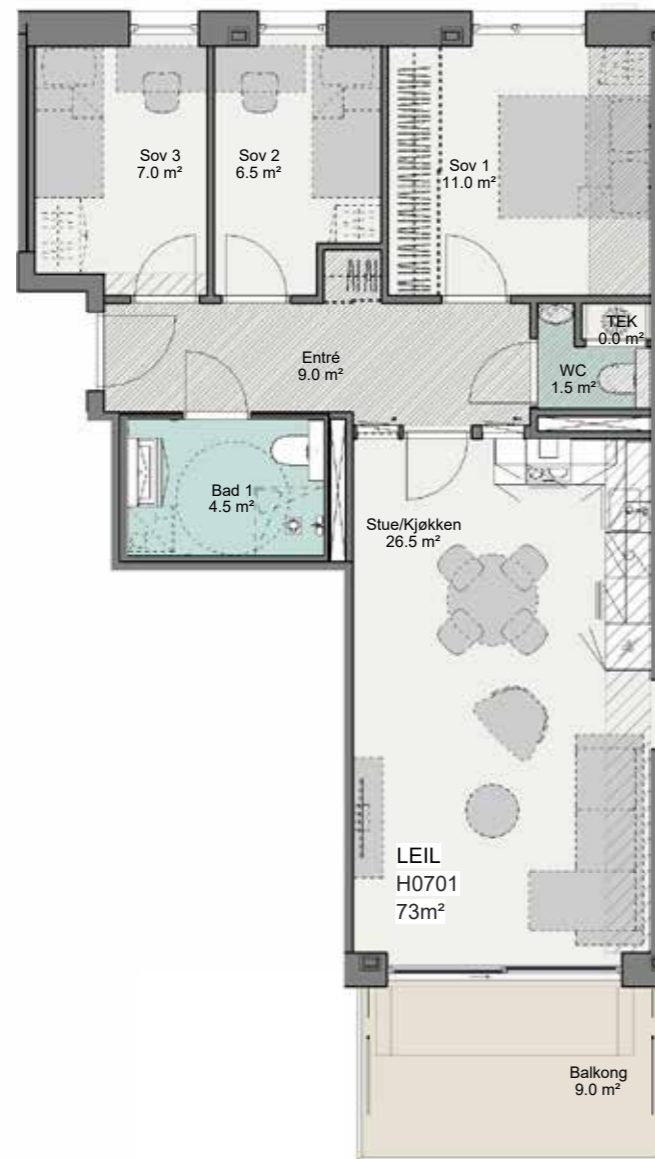
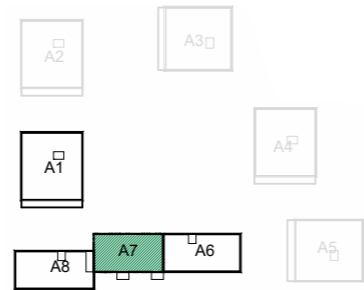
A7-H0701

Etasje: 7. etg

BRA-i: 73 kvm





TBA: 9 kvm

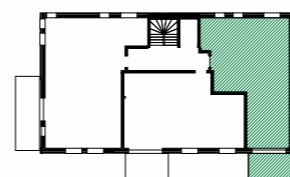
BRA-e: 5 kvm



1:100



-  Gips himlinger / Nedkassinger m/høyde min. 2.25m
-  Gips himlinger / Nedkassinger m/høyde min. 2.40m
-  Systemhimling på teknisk rom m/høyde min. 2.20m
-  Himling på bad m/høyde min. 2.20m



LEILIGHETER

4

ROMS

4-roms

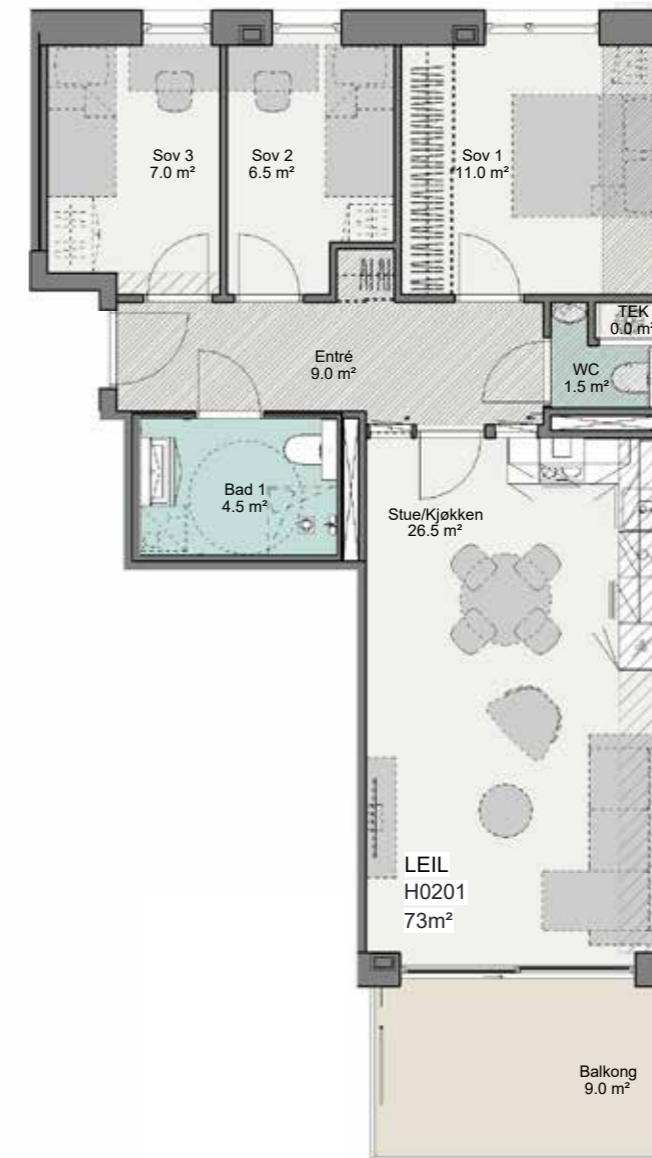
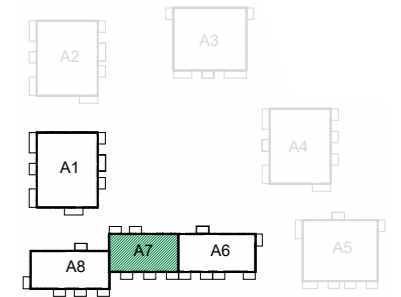
A7-H0201

Etasje: 2. etg

BRA-i: 73 kvm





TBA: 9 kvm

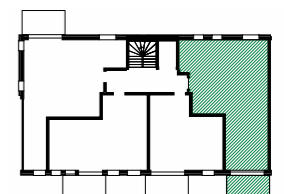
BRA-e: 5 kvm



1:100



-  Gips himlinger / Nedkassinger m/høyde min. 2.25m
-  Gips himlinger / Nedkassinger m/høyde min. 2.40m
-  Systemhimling på teknisk rom m/høyde min. 2.20m
-  Himling på bad m/høyde min. 2.20m



4-roms

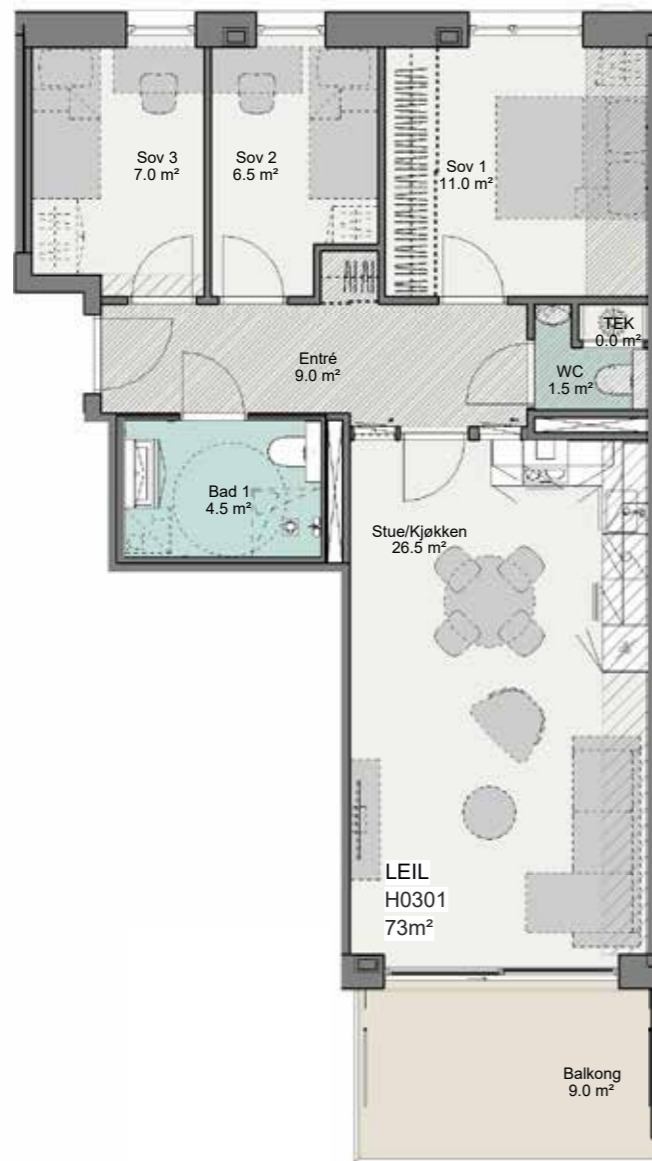
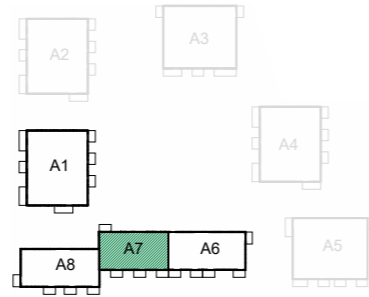
A7-H0301

Etasje: 3. etg

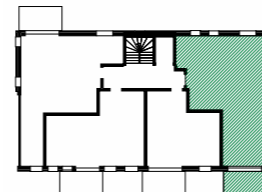
BRA-i: 73 kvm

TBA: 9 kvm

BRA-e: 5 kvm



- Gips himlinger / Nedkassinger m/høyde min. 2.25m
- Gips himlinger / Nedkassinger m/høyde min. 2.40m
- Systemhimling på teknisk rom m/høyde min. 2.20m
- Himling på bad m/høyde min. 2.20m



4-roms

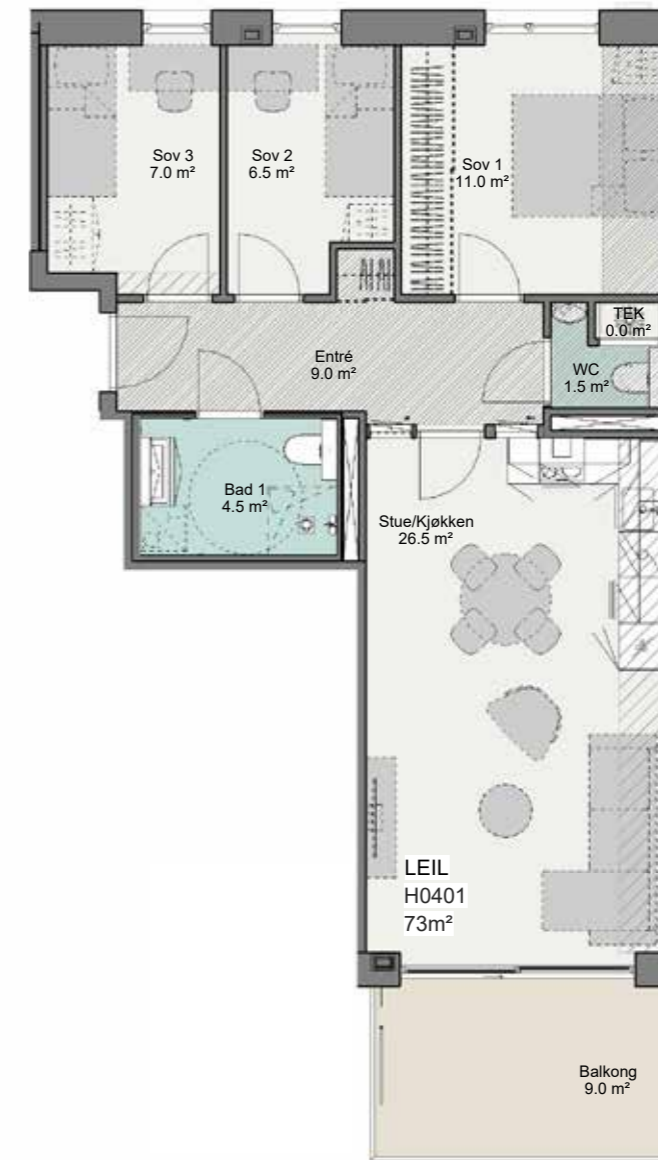
A7-H0401

Etasje: 4. etg

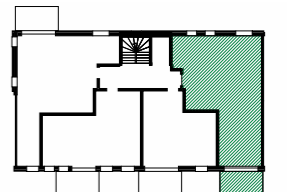
BRA-i: 73 kvm

TBA: 9 kvm

BRA-e: 5 kvm



- Gips himlinger / Nedkassinger m/høyde min. 2.25m
- Gips himlinger / Nedkassinger m/høyde min. 2.40m
- Systemhimling på teknisk rom m/høyde min. 2.20m
- Himling på bad m/høyde min. 2.20m



4-roms

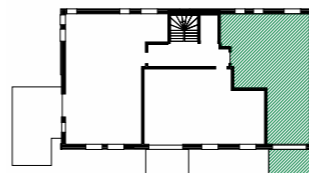
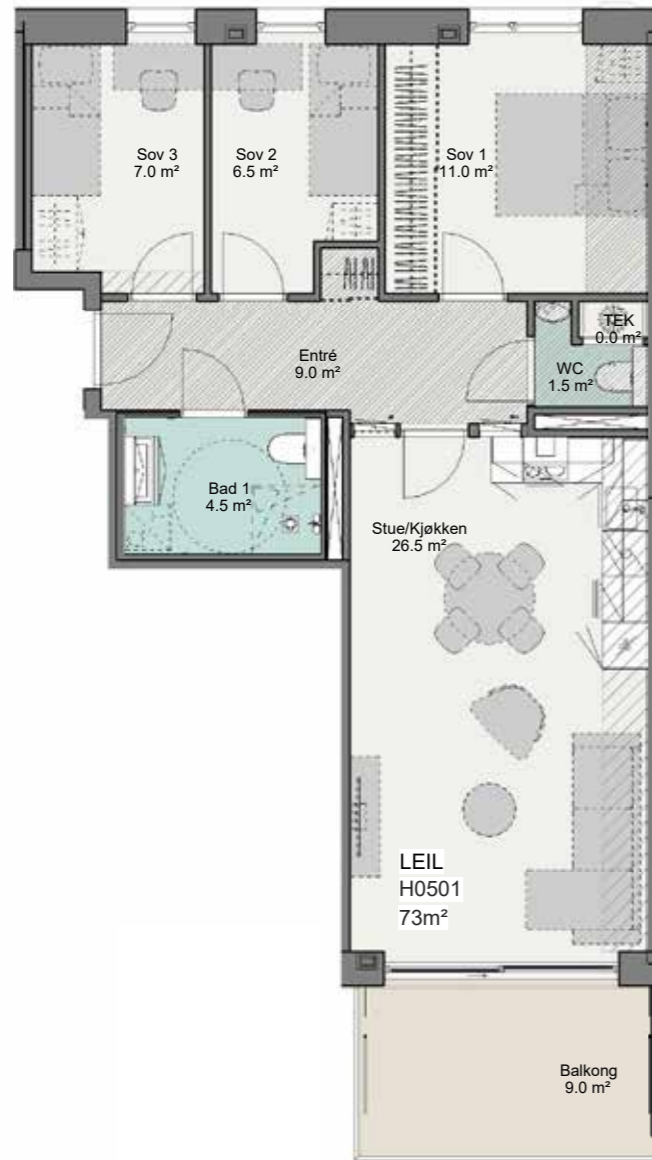
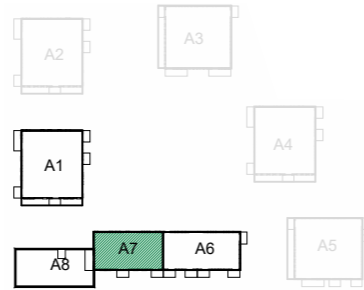
A7-H0501

Etasje: 5. etg

BRA-i: 73 kvm

TBA: 9 kvm

BRA-e: 5 kvm



- Gips himlinger / Nedkassinger m/høyde min. 2.25m
- Gips himlinger / Nedkassinger m/høyde min. 2.40m
- Systemhimling på teknisk rom m/høyde min. 2.20m
- Himling på bad m/høyde min. 2.20m



4-roms

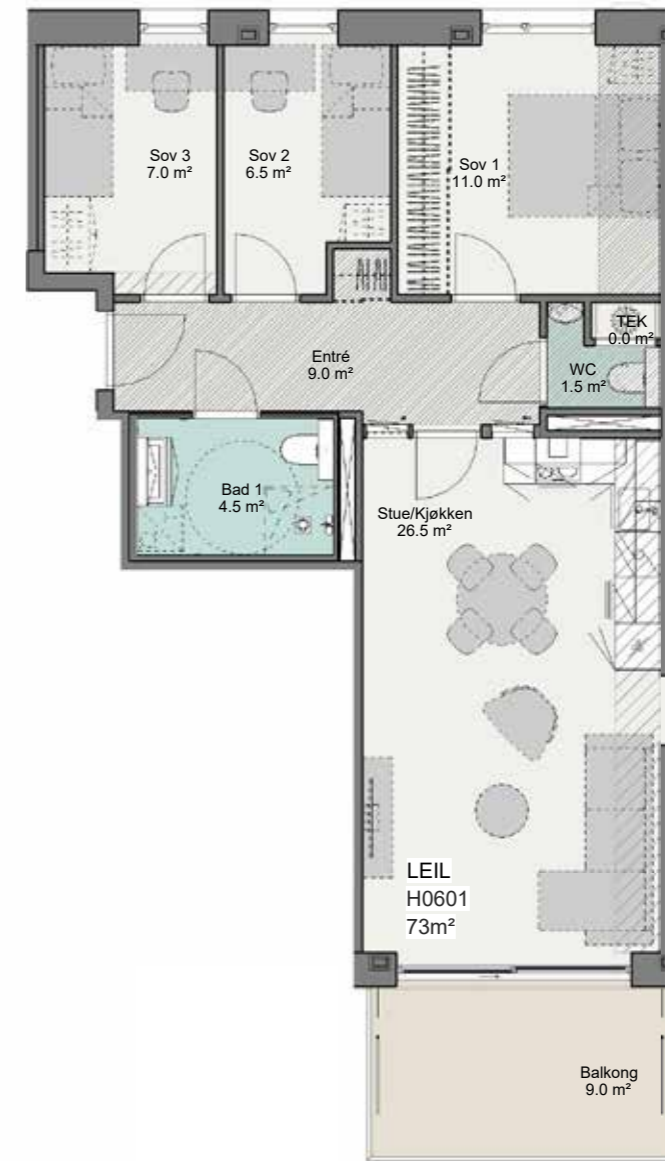
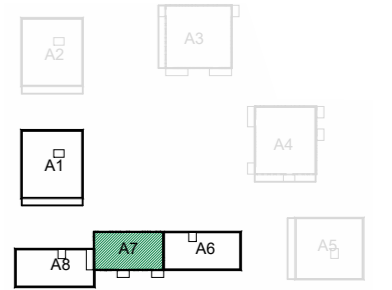
A7-H0601

Etasje: 6. etg

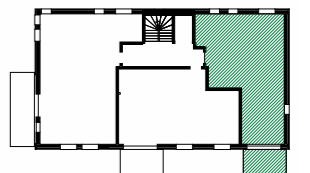
BRA-i: 73 kvm

TBA: 9 kvm

BRA-e: 5 kvm



- Gips himlinger / Nedkassinger m/høyde min. 2.25m
- Gips himlinger / Nedkassinger m/høyde min. 2.40m
- Systemhimling på teknisk rom m/høyde min. 2.20m
- Himling på bad m/høyde min. 2.20m



4-roms

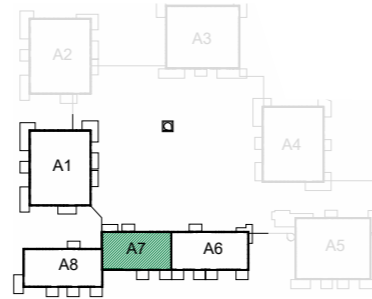
A7-H0101

Etasje: 1. etg

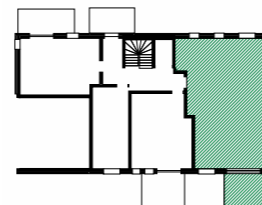
BRA-i: 87 kvm

TBA: 12 kvm

BRA-e: 5 kvm



- Gips himlinger / Nedkassinger m/høyde min. 2.25m
- Gips himlinger / Nedkassinger m/høyde min. 2.40m
- Systemhimling på teknisk rom m/høyde min. 2.20m
- Himling på bad m/høyde min. 2.20m



4-roms

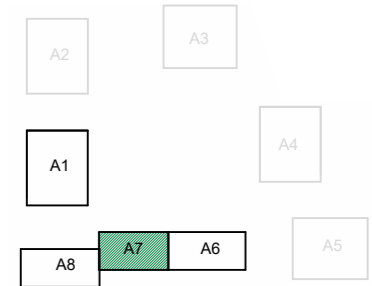
A7-H0503

Etasje: 5. etg

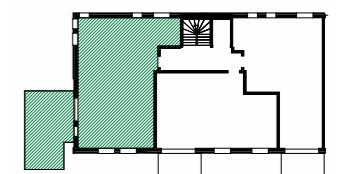
BRA-i: 93 kvm

TBA: 30 kvm

BRA-e: 5 kvm



- Gips himlinger / Nedkassinger m/høyde min. 2.25m
- Gips himlinger / Nedkassinger m/høyde min. 2.40m
- Systemhimling på teknisk rom m/høyde min. 2.20m
- Himling på bad m/høyde min. 2.20m



4-roms

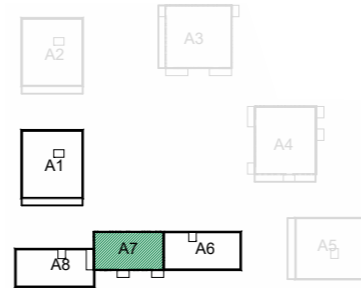
A7-H0603

Etasje: 6. etg

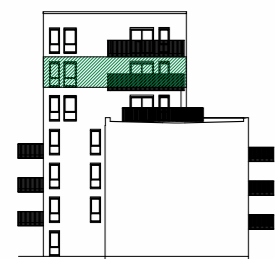
BRA-i: 93 kvm

TBA: 16 kvm

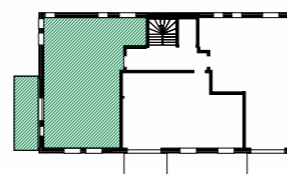
BRA-e: 5 kvm



1:100



- Gips himlinger / Nedkassinger m/høyde min. 2.25m
- Gips himlinger / Nedkassinger m/høyde min. 2.40m
- Systemhimling på teknisk rom m/høyde min. 2.20m
- Himling på bad m/høyde min. 2.20m



4-roms

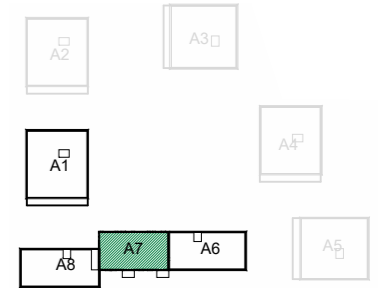
A7-H0703

Etasje: 7. etg

BRA-i: 93 kvm

TBA: 16 kvm

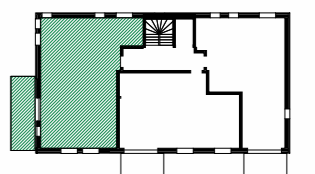
BRA-e: 5 kvm



1:100



- Gips himlinger / Nedkassinger m/høyde min. 2.25m
- Gips himlinger / Nedkassinger m/høyde min. 2.40m
- Systemhimling på teknisk rom m/høyde min. 2.20m
- Himling på bad m/høyde min. 2.20m



BYGG

A8

LEILIGHETER

2

ROMS

2-roms

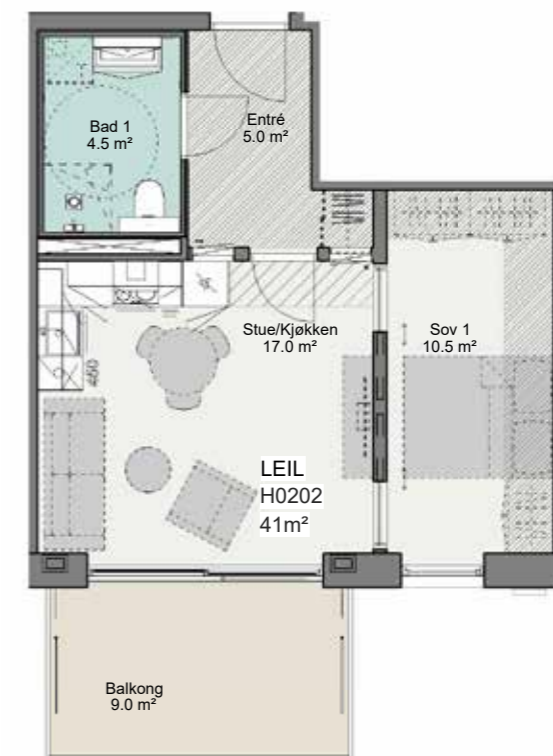
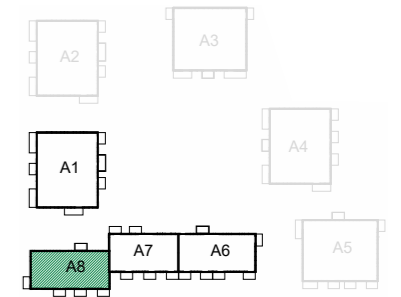
A8-H0202

Etasje: 2. etg

BRA-i: 41 kvm





TBA: 9 kvm

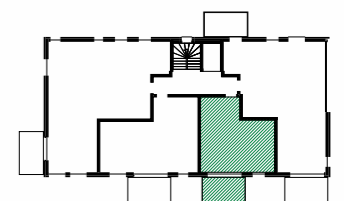
BRA-e: 2.5 kvm



1:100



-  Gips himlinger / Nedkassinger m/høyde min. 2.25m
-  Gips himlinger / Nedkassinger m/høyde min. 2.40m
-  Systemhimling på teknisk rom m/høyde min. 2.20m
-  Himling på bad m/høyde min. 2.20m



2-roms

A8-H0302

Etasje: 3. etg

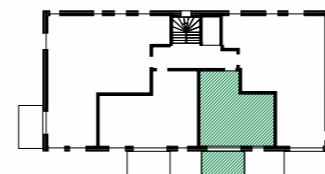
BRA-i: 41 kvm

TBA: 9 kvm

BRA-e: 2.5 kvm



1:100



- Gips himlinger / Nedkassinger m/høyde min. 2.25m
- Gips himlinger / Nedkassinger m/høyde min. 2.40m
- Systemhimling på teknisk rom m/høyde min. 2.20m
- Himling på bad m/høyde min. 2.20m



2-roms

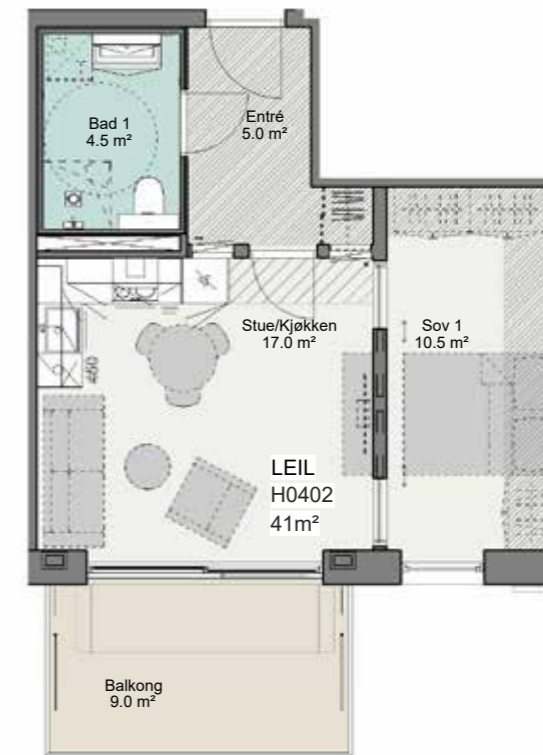
A8-H0402

Etasje: 4. etg

BRA-i: 41 kvm

TBA: 9 kvm

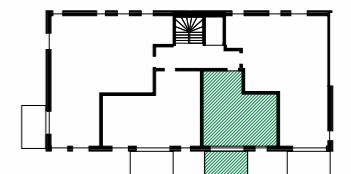
BRA-e: 2.5 kvm



1:100



- Gips himlinger / Nedkassinger m/høyde min. 2.25m
- Gips himlinger / Nedkassinger m/høyde min. 2.40m
- Systemhimling på teknisk rom m/høyde min. 2.20m
- Himling på bad m/høyde min. 2.20m



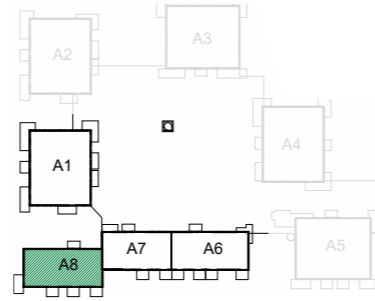
A8-H0102

Etasje: 1. etg

BRA-i: 43 kvm



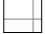

TBA: 12 kvm

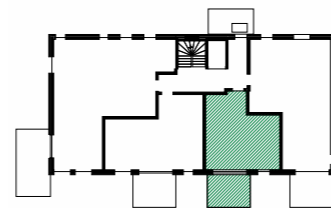
BRA-e: 2.5 kvm



1:100



-  Gips himlinger / Nedkassinger m/høyde min. 2.25m
-  Gips himlinger / Nedkassinger m/høyde min. 2.40m
-  Systemhimling på teknisk rom m/høyde min. 2.20m
-  Himling på bad m/høyde min. 2.20m



LEILIGHETER

3

ROMS

3-roms

A8-H0103

Etasje: 1. etg

BRA-i: 52 kvm

TBA: 12 kvm

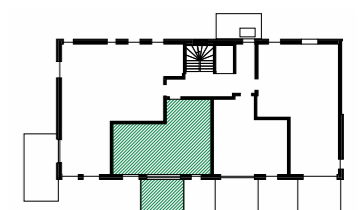
BRA-e: 5 kvm



1:100



- Gips himlinger / Nedkassinger m/høyde min. 2.25m
- Gips himlinger / Nedkassinger m/høyde min. 2.40m
- Systemhimling på teknisk rom m/høyde min. 2.20m
- Himling på bad m/høyde min. 2.20m



3-roms

A8-H0203

Etasje: 2. etg

BRA-i: 52 kvm

TBA: 9 kvm

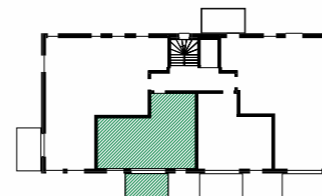
BRA-e: 5 kvm



1:100



- Gips himlinger / Nedkassinger m/høyde min. 2.25m
- Gips himlinger / Nedkassinger m/høyde min. 2.40m
- Systemhimling på teknisk rom m/høyde min. 2.20m
- Himling på bad m/høyde min. 2.20m



3-roms

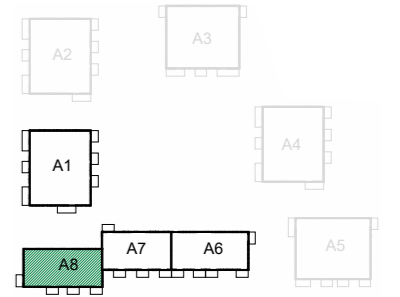
A8-H0303

Etasje: 3. etg

BRA-i: 52 kvm

TBA: 9 kvm

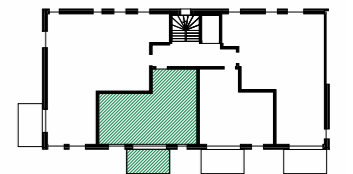
BRA-e: 5 kvm



1:100



- Gips himlinger / Nedkassinger m/høyde min. 2.25m
- Gips himlinger / Nedkassinger m/høyde min. 2.40m
- Systemhimling på teknisk rom m/høyde min. 2.20m
- Himling på bad m/høyde min. 2.20m



3-roms

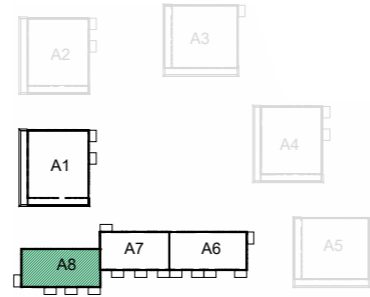
A8-H0403

Etasje: 4. etg

BRA-i: 52 kvm

TBA: 9 kvm

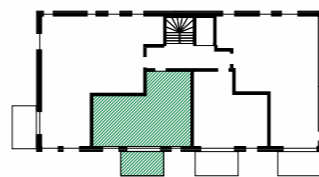
BRA-e: 5 kvm



1:100



- Gips himlinger / Nedkassinger m/høyde min. 2.25m
- Gips himlinger / Nedkassinger m/høyde min. 2.40m
- Systemhimling på teknisk rom m/høyde min. 2.20m
- Himling på bad m/høyde min. 2.20m



3-roms

A8-H0101

Etasje: 1. etg

BRA-i: 75 kvm

TBA: 12 kvm

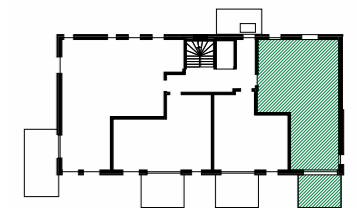
BRA-e: 5 kvm



1:100



- Gips himlinger / Nedkassinger m/høyde min. 2.25m
- Gips himlinger / Nedkassinger m/høyde min. 2.40m
- Systemhimling på teknisk rom m/høyde min. 2.20m
- Himling på bad m/høyde min. 2.20m



LEILIGHETER

4

ROMS

4-roms

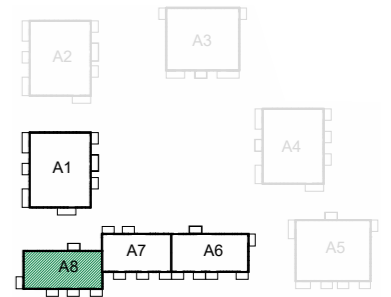
A8-H0201

Etasje: 2. etg

BRA-i: 82 kvm

TBA: 9 kvm

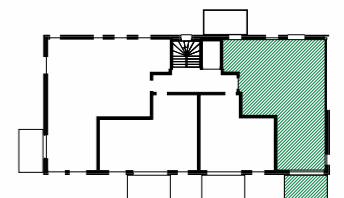
BRA-e: 5 kvm



1 : 100



- Gips himlinger / Nedkassinger m/høyde min. 2.25m
- Gips himlinger / Nedkassinger m/høyde min. 2.40m
- Systemhimling på teknisk rom m/høyde min. 2.20m
- Himling på bad m/høyde min. 2.20m



4-roms

A8-H0301

Etasje: 3. etg

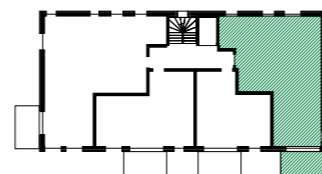
BRA-i: 83 kvm

TBA: 9 kvm

BRA-e: 5 kvm



- Gips himlinger / Nedkassinger m/høyde min. 2.25m
- Gips himlinger / Nedkassinger m/høyde min. 2.40m
- Systemhimling på teknisk rom m/høyde min. 2.20m
- Himling på bad m/høyde min. 2.20m



4-roms

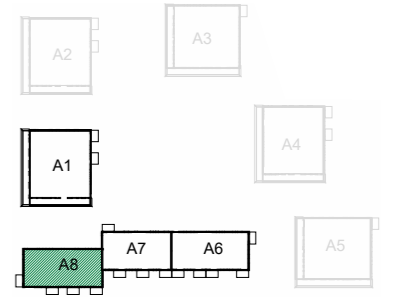
A8-H0401

Etasje: 4. etg

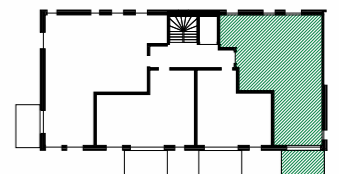
BRA-i: 83 kvm

TBA: 9 kvm

BRA-e: 5 kvm



- Gips himlinger / Nedkassinger m/høyde min. 2.25m
- Gips himlinger / Nedkassinger m/høyde min. 2.40m
- Systemhimling på teknisk rom m/høyde min. 2.20m
- Himling på bad m/høyde min. 2.20m



4-roms

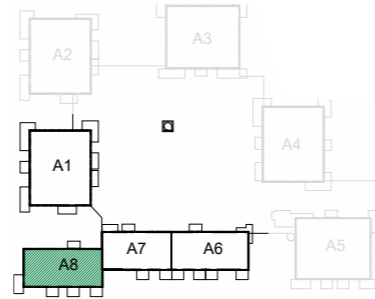
A8-H0104





Etasje: 1. etg

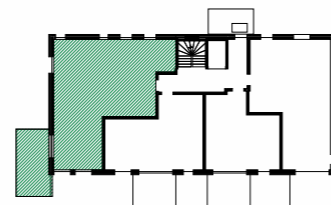
BRA-i: 96 kvm

TBA: 19 kvm

BRA-e: 5 kvm



-  Gips himlinger / Nedkassinger m/høyde min. 2.25m
-  Gips himlinger / Nedkassinger m/høyde min. 2.40m
-  Systemhimling på teknisk rom m/høyde min. 2.20m
-  Himling på bad m/høyde min. 2.20m



4-roms

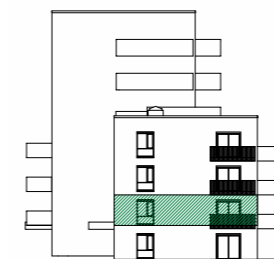
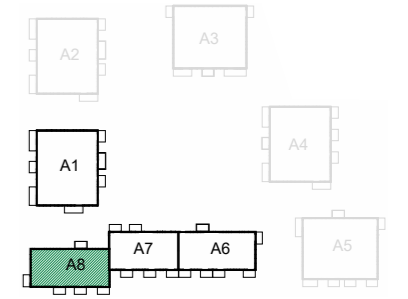
A8-H0204





Etasje: 2. etg

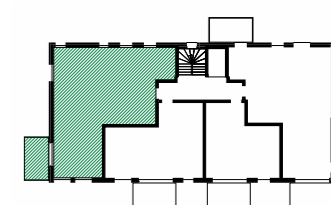
BRA-i: 96 kvm

TBA: 9 kvm

BRA-e: 5 kvm



-  Gips himlinger / Nedkassinger m/høyde min. 2.25m
-  Gips himlinger / Nedkassinger m/høyde min. 2.40m
-  Systemhimling på teknisk rom m/høyde min. 2.20m
-  Himling på bad m/høyde min. 2.20m



4-roms

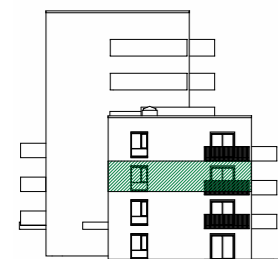
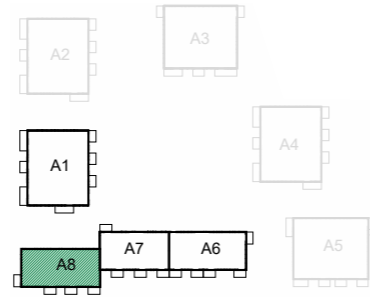
A8-H0304

Etasje: 3. etg

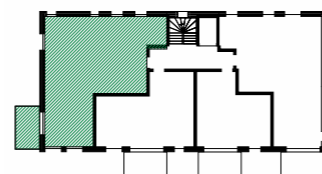
BRA-i: 96 kvm

TBA: 9 kvm

BRA-e: 5 kvm



- Gips himlinger / Nedkassinger m/høyde min. 2.25m
- Gips himlinger / Nedkassinger m/høyde min. 2.40m
- Systemhimling på teknisk rom m/høyde min. 2.20m
- Himling på bad m/høyde min. 2.20m



4-roms

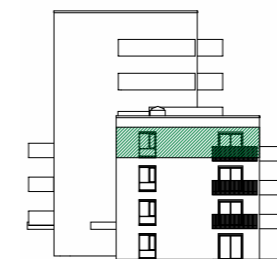
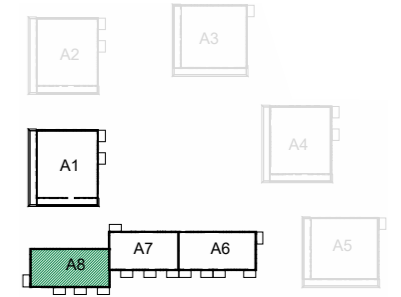
A8-H0404

Etasje: 4. etg

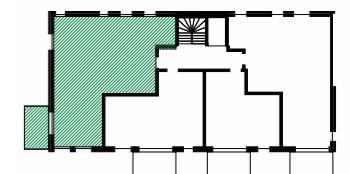
BRA-i: 96 kvm

TBA: 9 kvm

BRA-e: 5 kvm



- Gips himlinger / Nedkassinger m/høyde min. 2.25m
- Gips himlinger / Nedkassinger m/høyde min. 2.40m
- Systemhimling på teknisk rom m/høyde min. 2.20m
- Himling på bad m/høyde min. 2.20m



Ta kontakt med megler



Lars Bratseth
Eiendomsmegler

924 10 362
lars@roislandco.no



Ingrid Anne Fossli
Eiendomsmegler

938 85 778
ingrid@roislandco.no

Røisland & Co

Med forbehold om
trykkfeil i leilighetshefte.

Design, layout og innhold: Lemon
Foto: Rebecca Pierce

Februar 2026



Hjem fra
SKANSKA



VILLENGA